

**bs-9913R****[ Primary Antibody ]****HGFA Rabbit pAb****Bioss**  
ANTIBODIES

www.bioss.com.cn

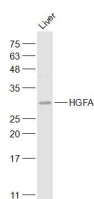
sales@bioss.com.cn

techsupport@bioss.com.cn

400-901-9800

**— DATASHEET —**

<b>Host:</b> Rabbit	<b>Isotype:</b> IgG	<b>Applications:</b> WB (1:500-2000)
<b>Clonality:</b> Polyclonal		<b>Reactivity:</b> Mouse (predicted: Human, Rat, Dog)
<b>GeneID:</b> 6692	<b>SWISS:</b> O43278	
<b>Target:</b> HGFA		<b>Predicted MW.:</b> 27 kDa
<b>Immunogen:</b> KLH conjugated synthetic peptide derived from human HGFA/HGF activator: 451-550/655.		<b>Subcellular Location:</b> Secreted
<b>Purification:</b> affinity purified by Protein A		
<b>Concentration:</b> 1mg/ml		
<b>Storage:</b> 0.01M TBS (pH7.4) with 1% BSA, 0.02% Proclin300 and 50% Glycerol. Shipped at 4°C. Store at -20°C for one year. Avoid repeated freeze/thaw cycles.		
<b>Background:</b> HGF activator belongs to the peptidase family S1 and activates hepatocyte growth factor (HGF) by converting it from a single chain to a heterodimeric form. HGF Activator is produced as a zymogen, and the form found in serum is largely the inactive single-chain form. It is activated to a heterodimeric form by endoproteolytic processing.		

**— VALIDATION IMAGES —**

Sample: Liver (Mouse) Lysate at 40 ug Primary:  
Anti-HGFA (bs-9913R) at 1/1000 dilution  
Secondary: IRDye800CW Goat Anti-Rabbit IgG at  
1/20000 dilution Predicted band size: 27 kD  
Observed band size: 27 kD