

bsm-61066R**[Primary Antibody]****Bioss**
ANTIBODIES

www.bioss.com.cn

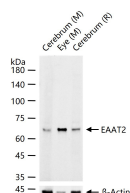
sales@bioss.com.cn

techsupport@bioss.com.cn

400-901-9800

EAAT2 Recombinant Rabbit mAb**— DATASHEET —**

Host: Rabbit	Isotype: IgG	Applications: WB (1:500-2000) Reactivity: Mouse, Rat (predicted: Human) Predicted MW.: 62 kDa Subcellular Location: Cell membrane
Clonality: Recombinant	CloneNo.: 5H3	
GeneID: 6506	SWISS: P43004	
Target: EAAT2		
Immunogen: A synthesized peptide derived from human EAAT2: 150-250.		
Purification: affinity purified by Protein A		
Concentration: 1mg/ml		
Storage: 0.01M TBS(pH7.4) with 1% BSA, 0.02% Proclin300 and 50% Glycerol. Shipped at 4°C. Store at -20 °C for one year. Avoid repeated freeze/thaw cycles.		
Background: This gene encodes a member of a family of solute transporter proteins. The membrane-bound protein is the principal transporter that clears the excitatory neurotransmitter glutamate from the extracellular space at synapses in the central nervous system. Glutamate clearance is necessary for proper synaptic activation and to prevent neuronal damage from excessive activation of glutamate receptors. Mutations in and decreased expression of this protein are associated with amyotrophic lateral sclerosis. Alternatively spliced transcript variants of this gene have been identified. [provided by RefSeq, Sep 2010]		

— VALIDATION IMAGES —

25 ug total protein per lane of various lysates (see on figure) probed with EAAT2 monoclonal antibody, unconjugated (bsm-61066R) at 1:1000 dilution and 4°C overnight incubation. Followed by conjugated secondary antibody incubation at r.t. for 60 min.