

**bs-3827R****[ Primary Antibody ]****LDHC Rabbit pAb****Bioss**  
**ANTIBODIES**

www.bioss.com.cn

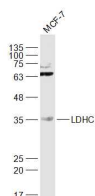
sales@bioss.com.cn

techsupport@bioss.com.cn

400-901-9800

**— DATASHEET —**

<b>Host:</b> Rabbit	<b>Isotype:</b> IgG	<b>Applications:</b> WB (1:500-2000)
<b>Clonality:</b> Polyclonal		<b>Reactivity:</b> Human (predicted: Mouse, Rat, Rabbit, Cow, Dog, Horse)
<b>GeneID:</b> 3948	<b>SWISS:</b> P07864	<b>Predicted MW.:</b> 36 kDa
<b>Target:</b> LDHC		<b>Subcellular Location:</b> Cytoplasm
<b>Immunogen:</b> KLH conjugated synthetic peptide derived from human LDHC: 231-332/332.		
<b>Purification:</b> affinity purified by Protein A		
<b>Concentration:</b> 1mg/ml		
<b>Storage:</b> 0.01M TBS (pH7.4) with 1% BSA, 0.02% Proclin300 and 50% Glycerol. Shipped at 4°C. Store at -20°C for one year. Avoid repeated freeze/thaw cycles.		
<b>Background:</b> Lactate dehydrogenase C catalyzes the conversion of L-lactate and NAD to pyruvate and NADH in the final step of anaerobic glycolysis. LDHC is testis-specific and belongs to the lactate dehydrogenase family. Two transcript variants have been detected which differ in the 5' untranslated region. [provided by RefSeq, Jul 2008].		

**— VALIDATION IMAGES —**

Sample: MCF-7(Human) Cell Lysate at 30 ug  
Primary: Anti-LDHC (bs-3827R) at 1/1000 dilution  
Secondary: IRDye800CW Goat Anti-Rabbit IgG at 1/20000 dilution Predicted band size: 36 kD  
Observed band size: 36 kD

**— SELECTED CITATIONS —**

- **[IF=9.231]** Yuqiang Bai. et al. Phosphorylation and acetylation responses of glycolytic enzymes in meat to different chilling rates. FOOD CHEM. 2023 Mar;;135896 WB ;Sheep. 10.1016/j.foodchem.2023.135896