

bs-3970R**[Primary Antibody]****SDHA Rabbit pAb****Bioss**
ANTIBODIES

www.bioss.com.cn

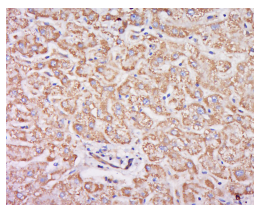
sales@bioss.com.cn

techsupport@bioss.com.cn

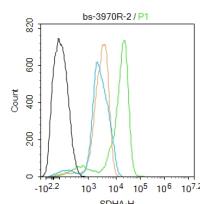
400-901-9800

— DATASHEET —

Host: Rabbit	Isotype: IgG	Applications: IHC-P (1:100-500)
Clonality: Polyclonal		IHC-F (1:100-500)
GeneID: 6389	SWISS: P31040	IF (1:100-500)
Target: SDHA		Flow-Cyt (2ug/Test)
Immunogen: KLH conjugated synthetic peptide derived from human SDHA: 561-664/664.		Reactivity: Human, Mouse (predicted: Rat)
Purification: affinity purified by Protein A		
Concentration: 1mg/ml		Predicted MW.: 70 kDa
Storage: 0.01M TBS (pH7.4) with 1% BSA, 0.02% Proclin300 and 50% Glycerol. Shipped at 4°C. Store at -20°C for one year. Avoid repeated freeze/thaw cycles.		Subcellular Location: Cytoplasm
Background: In aerobic respiration reactions, succinate dehydrogenase (SDH) catalyzes the oxidation of succinate and ubiquinone to fumarate and ubiquinol. Four subunits comprise the SDH protein complex: a flavochrome subunit (SDHA), an iron-sulfur protein (SDHB), and two membrane-bound subunits (SDHC and SDHD) anchored to the inner mitochondrial membrane. Mutations to these subunits cause mitochondrial dysfunction, corresponding to several distinct disorders. Mutations in the membrane bound components may cause hereditary paraganglioma, while SDHA mutations are associated with juvenile encephalopathy as well as Leigh Syndrome, a severe neurological disorder. Inactivating mutations in SDHB correlate with inherited, but not necessarily sporadic, cases of pheochromocytoma.		

— VALIDATION IMAGES —

Tissue/cell: human liver cancer; 4% Paraformaldehyde-fixed and paraffin-embedded; Antigen retrieval: citrate buffer (0.01M, pH 6.0), Boiling bathing for 15min; Block endogenous peroxidase by 3% Hydrogen peroxide for 30min; Blocking buffer (normal goat serum, C-0005) at 37°C for 20 min; Incubation: Anti-SDHA Polyclonal Antibody, Unconjugated (bs-3970R) 1:200, overnight at 4°C, followed by conjugation to the secondary antibody (SP-0023) and DAB (C-0010) staining



Blank control: RAW264.7. Primary Antibody (green line): Rabbit Anti-SDHA antibody (bs-3970R) Dilution: 2ug/Test; Secondary Antibody: Goat anti-rabbit IgG-FITC Dilution: 0.5ug/Test. Protocol The cells were fixed with 4% PFA (10min at room temperature) and then permeabilized with 0.1% PBST for 20 min at room temperature. The cells were then incubated in 5% BSA to block non-specific protein-protein interactions for 30 min at room temperature. Cells stained with Primary Antibody for 30 min at room temperature. The secondary antibody used for 40 min at room temperature. Acquisition of 20,000 events was performed.

— SELECTED CITATIONS —

- **[IF=2.502]** Liu Q et al. Leptin promotes fatty acid oxidation and OXPHOS via the c-Myc/PGC-1 pathway in cancer cells.

Important Note: This product as supplied is intended for research use only, not for use in human, therapeutic or diagnostic applications.

