

bs-3971R**[Primary Antibody]****Bioss**
ANTIBODIES

www.bioss.com.cn

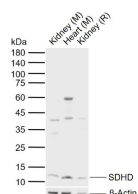
sales@bioss.com.cn

techsupport@bioss.com.cn

400-901-9800

SDHD Rabbit pAb**— DATASHEET —**

Host: Rabbit Clonality: Polyclonal GeneID: 6392 Target: SDHD Immunogen: KLH conjugated synthetic peptide derived from human SDHD: 81-159/159. Purification: affinity purified by Protein A Concentration: 1mg/ml Storage: 0.01M TBS (pH7.4) with 1% BSA, 0.02% Proclin300 and 50% Glycerol. Shipped at 4°C. Store at -20°C for one year. Avoid repeated freeze/thaw cycles. Background: Complex II of the respiratory chain, which is specifically involved in the oxidation of succinate, carries electrons from FADH to CoQ. The complex is composed of four nuclear-encoded subunits and is localized in the mitochondrial inner membrane. SDHD is one of two integral membrane proteins anchoring the complex to the matrix side of the membrane. Mutations in SDHD have been linked to hereditary paraganglioma. Function : Membrane-anchoring subunit of succinate dehydrogenase (SDH) that is involved in complex II of the mitochondrial electron transport chain and is responsible for transferring electrons from succinate to ubiquinone (coenzyme Q) (By similarity).	Isotype: IgG SWISS: O14521	Applications: WB (1:500-2000) ELISA (1:5000-10000) Reactivity: Mouse, Rat (predicted: Human, Chicken, Horse) Predicted MW.: 11 kDa Subcellular Location: Cell membrane ,Cytoplasm
--	---	--

— VALIDATION IMAGES —

Sample: Lane 1: Mouse Kidney tissue lysates
Lane 2: Mouse Heart tissue lysates Lane 3: Rat
Kidney tissue lysates Primary: Anti-SDHD
(bs-25125R) at 1/1000 dilution Secondary:
IRDye800CW Goat Anti-Rabbit IgG at 1/20000
dilution Predicted band size: 11 kDa Observed
band size: 11 kDa

— SELECTED CITATIONS —

- **[IF=3.041]** Huang Y et al. Germline SDHB and SDHD mutations in pheochromocytoma and paraganglioma patients. (2018) Endocr Connect.7(12):1217-1225. IHC ;Human. 30352407