

bs-3857R**[Primary Antibody]****Steroid sulfatase Rabbit pAb****BioSS**
ANTIBODIES

www.bioss.com.cn

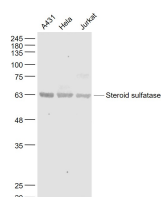
sales@bioss.com.cn

techsupport@bioss.com.cn

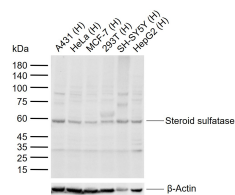
400-901-9800

DATASHEET

Host: Rabbit	Isotype: IgG	Applications: WB (1:500-2000)
Clonality: Polyclonal		Reactivity: Human (predicted: Mouse, Rat, Rabbit, Pig, Cow, Dog, Horse)
GeneID: 412	SWISS: P08842	Predicted MW.: 62 kDa
Target: Steroid sulfatase		Subcellular Location: Cell membrane ,Cytoplasm
Immunogen: KLH conjugated synthetic peptide derived from human Steroid sulfatase: 51-150/583.		
Purification: affinity purified by Protein A		
Concentration: 1mg/ml		
Storage: 0.01M TBS (pH7.4) with 1% BSA, 0.02% Proclin300 and 50% Glycerol. Shipped at 4°C. Store at -20°C for one year. Avoid repeated freeze/thaw cycles.		
Background: The protein encoded by this gene catalyzes the conversion of sulfated steroid precursors to estrogens during pregnancy. The encoded protein is found in the endoplasmic reticulum, where it acts as a homodimer. Mutations in this gene are known to cause X-linked ichthyosis (XLI). [provided by RefSeq, Jul 2008].		

VALIDATION IMAGES

Sample: A431(Human) Cell Lysate at 30 ug
 HeLa(Human) Cell Lysate at 30 ug Jurkat(Human)
 Cell Lysate at 30 ug Primary: Anti- Steroid
 sulfatase (bs-3857R) at 1/1000 dilution
 Secondary: IRDye800CW Goat Anti-Rabbit IgG at
 1/20000 dilution Predicted band size: 62 kD
 Observed band size: 63 kD



Sample: Lane 1: Human A431 cell lysates Lane 2:
 Human HeLa cell lysates Lane 3: Human MCF-7
 cell lysates Lane 4: Human 293T cell lysates Lane
 5: Human SH-SY5Y cell lysates Lane 6: Human
 HepG2 cell lysates Primary: Anti-Steroid
 sulfatase (bs-3857R) at 1/1000 dilution
 Secondary: IRDye800CW Goat Anti-Rabbit IgG at
 1/20000 dilution Predicted band size: 62 kDa
 Observed band size: 60 kDa