

bs-25783R**[Primary Antibody]****Cardiac Troponin T Rabbit pAb****Bioss**
ANTIBODIES

www.bioss.com.cn

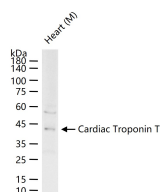
sales@bioss.com.cn

techsupport@bioss.com.cn

400-901-9800

— DATASHEET —

| | | |
|--|----------------------|--|
| Host: Rabbit | Isotype: IgG | Applications: WB (1:500-2000) |
| Clonality: Polyclonal | | Reactivity: Mouse |
| GeneID: 7139 | SWISS: P45379 | |
| Target: Cardiac Troponin T | | |
| Immunogen: KLH conjugated synthetic peptide derived from human Cardiac Troponin T: 241-298/298. | | Predicted MW.: 36 kDa |
| Purification: affinity purified by Protein A | | Subcellular Location: Cytoplasm |
| Concentration: 1mg/ml | | |
| Storage: 0.01M TBS(pH7.4) with 1% BSA, 0.02% Proclin300 and 50% Glycerol. Shipped at 4°C. Store at -20 °C for one year. Avoid repeated freeze/thaw cycles. | | |
| Background: The protein encoded by this gene is the tropomyosin-binding subunit of the troponin complex, which is located on the thin filament of striated muscles and regulates muscle contraction in response to alterations in intracellular calcium ion concentration. Mutations in this gene have been associated with familial hypertrophic cardiomyopathy as well as with dilated cardiomyopathy. Transcripts for this gene undergo alternative splicing that results in many tissue-specific isoforms, however, the full-length nature of some of these variants has not yet been determined. [provided by RefSeq]. | | |

— VALIDATION IMAGES —

25 ug total protein per lane of various lysates (see on figure) probed with Cardiac Troponin T polyclonal antibody, unconjugated (bs-25783R) at 1:1000 dilution and 4°C overnight incubation. Followed by conjugated secondary antibody incubation at r.t. for 60 min.