

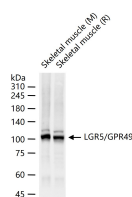
bsm-61052R**[Primary Antibody]****LGR5/GPR49 Recombinant Rabbit mAb****Bioss**
ANTIBODIES

www.bioss.com.cn

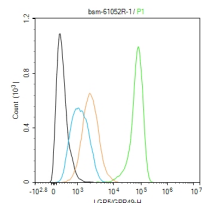
sales@bioss.com.cn

techsupport@bioss.com.cn

400-901-9800

— DATASHEET —**Host:** Rabbit**Isotype:** IgG**Clonality:** Recombinant**CloneNo.:** 8H13**GeneID:** 8549**SWISS:** O75473**Target:** LGR5/GPR49**Immunogen:** A synthesized peptide derived from human LGR5: 818-907.**Purification:** affinity purified by Protein A**Storage:** 0.01M TBS(pH7.4) with 1% BSA, 0.02% Proclin300 and 50% Glycerol.
Shipped at 4°C. Store at -20 °C for one year. Avoid repeated freeze/thaw cycles.**Background:** The protein encoded by this gene is a leucine-rich repeat-containing receptor (LGR) and member of the G protein-coupled, 7-transmembrane receptor (GPCR) superfamily. The encoded protein is a receptor for R-spondins and is involved in the canonical Wnt signaling pathway. This protein plays a role in the formation and maintenance of adult intestinal stem cells during postembryonic development. Several transcript variants encoding different isoforms have been found for this gene. [provided by RefSeq, Sep 2015]**Applications:** WB (1:500-2000)**Flow-Cyt** (1:50-100)**Reactivity:** Human, Mouse, Rat**Predicted
MW.:** 98**Subcellular
Location:** Cell membrane**— VALIDATION IMAGES —**

25 ug total protein per lane of various lysates (see on figure) probed with LGR5/GPR49 monoclonal antibody, unconjugated (bsm-61052R) at 1:5000 dilution and 4°C overnight incubation. Followed by conjugated secondary antibody incubation at r.t. for 60 min.



The HepG2 (H) cells were fixed with 4% PFA (10 min at r.t.) and then permeabilized with 90% ice-cold methanol for 20 min at -20°C, the cells then were incubated in 5% BSA to block non-specific protein-protein interactions (30 min at r.t.). Primary Antibody (green): Rabbit Anti-LGR5/GPR49 antibody (bsm-61052R): 1 µg/10⁶ cells; Secondary Antibody (white blue): Goat anti-Rabbit IgG-FITC (bs-60295G-FITC): 1 µg/test. Isotype Control (orange): Rabbit IgG (bs-0295P). Blank control (black): PBS. Acquisition of 20,000 events was performed.