

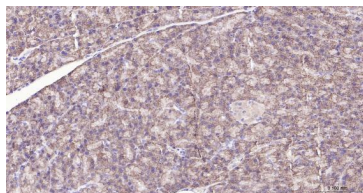
bsm-61049R**[Primary Antibody]****BioSS**
ANTIBODIES

www.bioss.com.cn

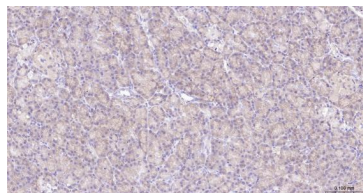
sales@bioss.com.cn

techsupport@bioss.com.cn

400-901-9800

Frizzled 8 Recombinant Rabbit mAb**— DATASHEET —****Host:** Rabbit**Isotype:** IgG**Clonality:** Recombinant**CloneNo.:** 15G15**GeneID:** 8325**SWISS:** Q9H461**Target:** Frizzled 8**Immunogen:** A synthesized peptide derived from human Frizzled 8: 640-694/694.**Purification:** affinity purified by Protein A**Storage:** 0.01M TBS(pH7.4) with 1% BSA, 0.02% Proclin300 and 50% Glycerol. Shipped at 4°C. Store at -20 °C for one year. Avoid repeated freeze/thaw cycles.**Background:** The frizzled gene, originally identified in *Drosophila melanogaster*, is involved in the development of tissue polarity. The mammalian homolog of frizzled, as well as several secreted mammalian frizzled-related proteins (FRPs), have been described. The frizzled proteins contain seven transmembrane domains, a cysteine-rich domain in the extracellular region and a carboxy-terminal Ser/Thr-xxx-Val motif. They function as receptors for Wnt and are generally coupled to G proteins. The cysteine-rich domain of frizzled-8 blocks endogenous Wnts and the effects of Wnt-1 and Wnt-5 on proliferation. The mouse frizzled-8 gene, which encodes a Wnt receptor, is a potent cancer-associated activator of the Beta-catenin-TCF pathway. The frizzled-8 gene contains no introns. Frizzled-8 mRNA has been detected in fetal brain and kidney, and also in adult pancreas, skeletal muscle, kidney and heart. Frizzled is highly expressed in HeLa S3 (cervical uterus cancer) cells and A549 lung cancer cells.**Applications:** IHC-P (1:100-500)**IHC-F** (1:100-500)**IF** (1:100-500)**Reactivity:** Human, Mouse, Rat**Predicted
MW.:** 70**Subcellular
Location:** Cell membrane ,Cytoplasm**— VALIDATION IMAGES —**

Paraformaldehyde-fixed, paraffin embedded Mouse pancreas; Antigen retrieval by boiling in sodium citrate buffer (pH6.0) for 15 min; Antibody incubation with Frizzled 8 Monoclonal Antibody, Unconjugated(bsm-61049R) at 1:200 overnight at 4°C, followed by conjugation to the SP Kit(Rabbit, SP-0023) and DAB (C-0010) staining.



Paraformaldehyde-fixed, paraffin embedded Rat pancreas; Antigen retrieval by boiling in sodium citrate buffer (pH6.0) for 15 min; Antibody incubation with Frizzled 8 Monoclonal Antibody, Unconjugated(bsm-61049R) at 1:200 overnight at 4°C, followed by conjugation to the SP Kit(Rabbit, SP-0023) and DAB (C-0010) staining.