

**bsm-61037R****[ Primary Antibody ]**

**Bioss**  
ANTIBODIES

www.bioss.com.cn

sales@bioss.com.cn

techsupport@bioss.com.cn

400-901-9800

## PDGF Receptor beta Recombinant Rabbit mAb

### DATASHEET

**Host:** Rabbit**Isotype:** IgG**Clonality:** Recombinant**CloneNo.:** 3A3**GeneID:** 5159**SWISS:** P09619**Target:** PDGF Receptor beta**Immunogen:** A synthesized peptide derived from human PDGFR beta: 1051-1106.**Purification:** affinity purified by Protein A

**Storage:** 0.01M TBS(pH7.4) with 1% BSA, 0.02% Proclin300 and 50% Glycerol. Shipped at 4°C. Store at -20 °C for one year. Avoid repeated freeze/thaw cycles.

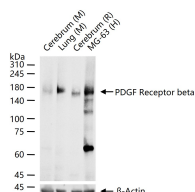
**Background:** The PDGF Receptor Type A (Alpha platelet-derived growth factor receptor precursor, CD140a antigen), a 170kD protein, binds all three isoforms of PDGF with high affinity whereas the PDGF Receptor Type B, a 190kD protein, appears to bind only the PDGF BB homodimer with high affinity. Both receptors are transmembranous, ligand activated protein tyrosine kinases, which phosphorylate a number of important signal transduction proteins, which are bound with differential affinities via SH2 domains. The response of any given cell to PDGF will depend on the types of receptors displayed on the surface and isoforms of PDGF present in the extracellular environment.

**Applications:** WB (1:1000-5000)**IHC-P** (1:200-800)**IHC-F** (1:200-800)**IF** (1:200-800)**Reactivity:** Human, Mouse, Rat

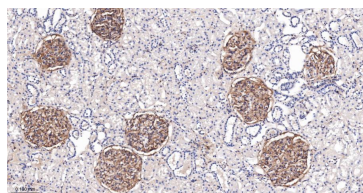
**Predicted**  
**MW.:** 118

**Subcellular**  
**Location:** Cell membrane ,Cytoplasm

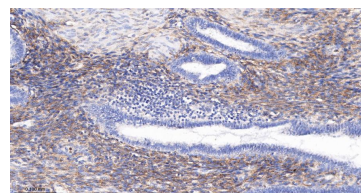
### VALIDATION IMAGES



25 ug total protein per lane of various lysates (see on figure) probed with PDGF Receptor beta monoclonal antibody, unconjugated (bsm-61037R) at 1:1000 dilution and 4°C overnight incubation. Followed by conjugated secondary antibody incubation at r.t. for 60 min.



Paraformaldehyde-fixed, paraffin embedded Human Kidney; Antigen retrieval by boiling in sodium citrate buffer (pH6.0) for 15 min; Antibody incubation with PDGF Receptor beta Monoclonal Antibody, Unconjugated(bsm-61037R) at 1:200 overnight at 4°C, followed by conjugation to the SP Kit (Rabbit, SP-0023) and DAB (C-0010) staining.



Paraformaldehyde-fixed, paraffin embedded Human Uterus; Antigen retrieval by boiling in sodium citrate buffer (pH6.0) for 15 min; Antibody incubation with PDGF Receptor beta Monoclonal Antibody, Unconjugated(bsm-61037R) at 1:200 overnight at 4°C, followed by conjugation to the SP Kit (Rabbit, SP-0023) and DAB (C-0010) staining.