

**bs-4611R****[ Primary Antibody ]****BioSS**  
**ANTIBODIES**

www.bioss.com.cn

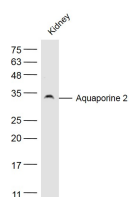
sales@bioss.com.cn

techsupport@bioss.com.cn

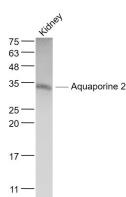
400-901-9800

**AQP2 Rabbit pAb****— DATASHEET —****Host:** Rabbit**Isotype:** IgG**Clonality:** Polyclonal**GeneID:** 359**SWISS:** P41181**Target:** AQP2**Immunogen:** KLH conjugated synthetic peptide derived from human AQP2: 171-271/271. < Extracellular >**Purification:** affinity purified by Protein A**Concentration:** 1mg/ml**Storage:** 0.01M TBS (pH7.4) with 1% BSA, 0.02% Proclin300 and 50% Glycerol.

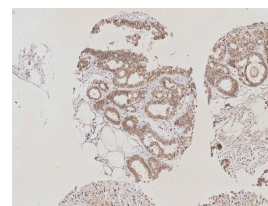
Shipped at 4°C. Store at -20°C for one year. Avoid repeated freeze/thaw cycles.

**Background:** This gene encodes a water channel protein located in the kidney collecting tubule. It belongs to the MIP/aquaporin family, some members of which are clustered together on chromosome 12q13. Mutations in this gene have been linked to autosomal dominant, and recessive forms of nephrogenic diabetes insipidus. Belongs to the MIP/aquaporin (TC 1.A.8) family.**Applications:** WB (1:500-2000)**IHC-P** (1:100-500)**IHC-F** (1:100-500)**IF** (1:100-500)**Reactivity:** Human, Mouse, Rat  
(predicted: Dog)**Predicted  
MW.:** 30 kDa**Subcellular  
Location:** Cell membrane ,Cytoplasm**— VALIDATION IMAGES —**

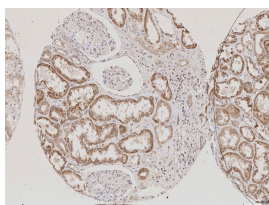
Sample: Kidney (Rat) Lysate at 40 ug Primary:  
Anti-Aquaporine 2 (bs-4611R) at 1/300 dilution  
Secondary: IRDye800CW Goat Anti-Rabbit IgG at  
1/20000 dilution Predicted band size: 30 kD  
Observed band size: 30 kD



Sample: Kidney (Mouse) Lysate at 40 ug Primary:  
Anti- Aquaporine 2 (bs-4611R) at 1/1000 dilution  
Secondary: IRDye800CW Goat Anti-Rabbit IgG at  
1/20000 dilution Predicted band size: 30 kD  
Observed band size: 32 kD



Independently Validated Antibody, image  
provided by Science Direct, badge number  
029457:Formalin-fixed and paraffin embedded  
human kidney labeled with Anti-AQP2  
Polyclonal Antibody, Unconjugated (bs-4611R)  
at 1:250 followed by conjugation to the  
secondary antibody and DAB staining



Independently Validated Antibody, image  
provided by Science Direct, badge number  
029457:Formalin-fixed and paraffin embedded  
human kidney labeled with Anti-AQP2  
Polyclonal Antibody, Unconjugated (bs-4611R)  
at 1:250 followed by conjugation to the  
secondary antibody and DAB staining

## — SELECTED CITATIONS —

---

- **[IF=12.12]** Lazzeri et al. Endocycle-related tubular cell hypertrophy and progenitor proliferation recover renal function after acute kidney injury. (2018) Nat.Commun. 9:1344 FCM ;Mouse. 29632300
- **[IF=6.7]** Shi-Kang Zhou. et al. Fructus Jujubae cooperated with water-expelling members in Shizao decoction alleviated intestinal injury and malignant ascites by modulating gut microbiota and metabolic homeostasis. PHYTOMEDICINE. 2024 Oct;133:155895 IHC ;Rat. 39084184
- **[IF=0.8]** Hrabia Anna. et al. Is selected aquaporin expression in the chicken adrenal gland affected by disturbed sex steroid action?. FOLIA BIOL-KRAKOW. 2024 Oct 24 WB,IHC,IF ;Chicken. 10.3409/fb\_72-3.12