

bsm-61031R**[Primary Antibody]****BioSS**
ANTIBODIES

www.bioss.com.cn

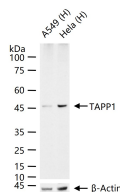
sales@bioss.com.cn

techsupport@bioss.com.cn

400-901-9800

TAPP1 Recombinant Rabbit mAb**— DATASHEET —**

Host: Rabbit	Isotype: IgG	Applications: WB (1:500-2000) Reactivity: Human (predicted: Mouse, Rat) Predicted MW.: 46 Subcellular Location: Cell membrane ,Cytoplasm
Clonality: Recombinant	CloneNo.: 10D11	
GeneID: 59338	SWISS: Q9HB21	
Target: TAPP1		
Immunogen: A synthesized peptide derived from human PLEKHA1: 330-370.		
Purification: affinity purified by Protein A		
Storage: 0.01M TBS(pH7.4) with 1% BSA, 0.02% Proclin300 and 50% Glycerol. Shipped at 4°C. Store at -20 °C for one year. Avoid repeated freeze/thaw cycles.		
Background: This gene encodes a pleckstrin homology domain-containing adapter protein. The encoded protein is localized to the plasma membrane where it specifically binds phosphatidylinositol 3,4-bisphosphate. This protein may be involved in the formation of signaling complexes in the plasma membrane. Polymorphisms in this gene are associated with age-related macular degeneration. Alternate splicing results in multiple transcript variants. A pseudogene of this gene is found on chromosome 5.[provided by RefSeq, Sep 2010]		

— VALIDATION IMAGES —

25 ug total protein per lane of various lysates (see on figure) probed with TAPP1 monoclonal antibody, unconjugated (bsm-61031R) at 1:1000 dilution and 4°C overnight incubation. Followed by conjugated secondary antibody incubation at r.t. for 60 min.