

bsm-61024R**[Primary Antibody]**

Dystrophin Recombinant Rabbit mAb

BioSS
ANTIBODIES

www.bioss.com.cn

sales@bioss.com.cn

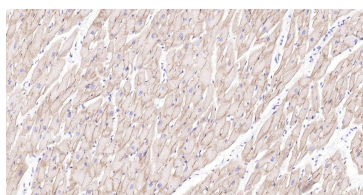
techsupport@bioss.com.cn

400-901-9800

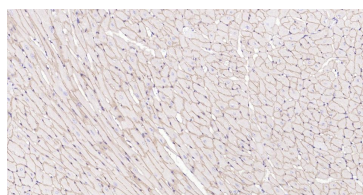
— DATASHEET —

Host: Rabbit**Isotype:** IgG**Clonality:** Recombinant**CloneNo.:** 8C6**GeneID:** 1756**SWISS:** P11532**Target:** Dystrophin**Immunogen:** A synthesized peptide derived from human Dystrophin: 3611-3685.**Purification:** affinity purified by Protein A**Storage:** 0.01M TBS(pH7.4) with 1% BSA, 0.02% Proclin300 and 50% Glycerol.
Shipped at 4°C. Store at -20 °C for one year. Avoid repeated freeze/thaw cycles.**Background:** This gene spans a genomic range of greater than 2 Mb and encodes a large protein containing an N-terminal actin-binding domain and multiple spectrin repeats. The encoded protein forms a component of the dystrophin-glycoprotein complex (DGC), which bridges the inner cytoskeleton and the extracellular matrix. Deletions, duplications, and point mutations at this gene locus may cause Duchenne muscular dystrophy (DMD), Becker muscular dystrophy (BMD), or cardiomyopathy. Alternative promoter usage and alternative splicing result in numerous distinct transcript variants and protein isoforms for this gene. [provided by RefSeq, Dec 2016]**Applications:** IHC-P (1:50-200)**IHC-F** (1:50-200)**IF** (1:50-200)**Reactivity:** Human, Mouse, Rat**Predicted
MW.:** 405**Subcellular
Location:** Cell membrane ,Cytoplasm

— VALIDATION IMAGES —



Paraformaldehyde-fixed, paraffin embedded Human Heart; Antigen retrieval by boiling in sodium citrate buffer (pH6.0) for 15 min; Antibody incubation with Dystrophin Monoclonal Antibody, Unconjugated(bsm-61024R) at 1:100 overnight at 4°C, followed by conjugation to the SP Kit (Rabbit, SP-0023) and DAB (C-0010) staining.



Paraformaldehyde-fixed, paraffin embedded Mouse Heart; Antigen retrieval by boiling in sodium citrate buffer (pH6.0) for 15 min; Antibody incubation with Dystrophin Monoclonal Antibody, Unconjugated(bsm-61024R) at 1:100 overnight at 4°C, followed by conjugation to the SP Kit (Rabbit, SP-0023) and DAB (C-0010) staining.