

bsm-61019R**[Primary Antibody]****CSK Recombinant Rabbit mAb****Bioss**
ANTIBODIES

www.bioss.com.cn

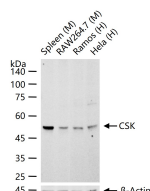
sales@bioss.com.cn

techsupport@bioss.com.cn

400-901-9800

— DATASHEET —

Host: Rabbit	Isotype: IgG	Applications: WB (1:500-2000) Reactivity: Human, Mouse (predicted: Rat) Predicted MW.: 51 Subcellular Location: Cell membrane ,Cytoplasm
Clonality: Recombinant	CloneNo.: 7H2	
GeneID: 1445	SWISS: P41240	
Target: CSK		
Immunogen: A synthesized peptide derived from human CSK: 70-100/450.		
Purification: affinity purified by Protein A		
Storage: 0.01M TBS(pH7.4) with 1% BSA, 0.02% Proclin300 and 50% Glycerol. Shipped at 4°C. Store at -20 °C for one year. Avoid repeated freeze/thaw cycles.		
Background: All members of the Src gene family of tyrosine kinases are characterized by a carboxy terminal domain tyrosine which is highly phosphorylated in the inactive form of the enzyme and phosphorylated to a much lesser extent when the enzyme is active. In the case of Src p60, Y527 is this tyrosine; however, a mutant form of c-Src in which Y527 is replaced by phenylalanine is transforming and displays 5- to 10-fold elevated kinase activity compared to its normal counterpart. Csk has been identified as a Src-related tyrosine kinase having both SH2 and SH3 domains and a catalytic domain but lacking sequences amino terminal to the SH3 domain as well as carboxy terminal regulatory sequences. Csk phosphorylates Src on Y527 and also downregulates Lyn, Fyn and Lck by tyrosine phosphorylation of carboxy terminal regulatory sites.		

— VALIDATION IMAGES —

25 ug total protein per lane of various lysates (see on figure) probed with CSK monoclonal antibody, unconjugated (bsm-61019R) at 1:1000 dilution and 4°C overnight incubation. Followed by conjugated secondary antibody incubation at r.t. for 60 min.