

bsm-61064R

[Primary Antibody]

Bioss
ANTIBODIES

www.bioss.com.cn

sales@bioss.com.cn

techsupport@bioss.com.cn

400-901-9800

APPL1 Recombinant Rabbit mAb

DATASHEET

Host: Rabbit

Clonality: Recombinant

CloneNo.: 6F1

Target: APPL1

Immunogen: A synthesized peptide derived from human Dip13 alpha: 400-450/709.

Purification: affinity purified by Protein A

Concentration: 1mg/ml

Storage: 0.01M TBS(pH7.4) with 1% BSA, 0.02% Proclin300 and 50% Glycerol.
Shipped at 4°C. Store at -20 °C for one year. Avoid repeated freeze/thaw cycles.

Background: The protein encoded by this gene has been shown to be involved in the regulation of cell proliferation, and in the crosstalk between the adiponectin signalling and insulin signalling pathways. The encoded protein binds many other proteins, including RAB5A, DCC, AKT2, PIK3CA, adiponectin receptors, and proteins of the NuRD/MeCP1 complex. This protein is found associated with endosomal membranes, but can be released by EGF and translocated to the nucleus. [provided by RefSeq, Jul 2008]

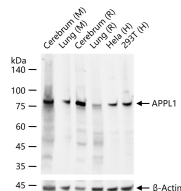
Applications: **WB** (1:500-2000)
IHC-P (1:100-500)
IHC-F (1:100-500)
IF (1:100-500)

Reactivity: Human, Mouse, Rat

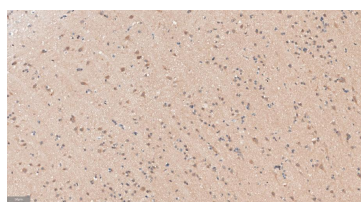
Predicted MW.: 80 kDa

Subcellular Location: Cell membrane ,Cytoplasm ,Nucleus

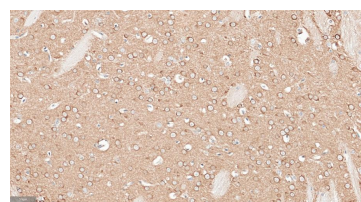
VALIDATION IMAGES



25 ug total protein per lane of various lysates (see on figure) probed with APPL1 monoclonal antibody, unconjugated (bsm-61064R) at 1:1000 dilution and 4°C overnight incubation. Followed by conjugated secondary antibody incubation at r.t. for 60 min.



Paraformaldehyde-fixed, paraffin embedded Human Cerebrum; Antigen retrieval by boiling in sodium citrate buffer (pH6.0) for 15 min; Antibody incubation with APPL1 Monoclonal Antibody, Unconjugated(bsm-61064R) at 1:250 overnight at 4°C, followed by conjugation to the SP Kit (Rabbit, SP-0023) and DAB (C-0010) staining.



Paraformaldehyde-fixed, paraffin embedded Rat Cerebrum; Antigen retrieval by boiling in sodium citrate buffer (pH6.0) for 15 min; Antibody incubation with APPL1 Monoclonal Antibody, Unconjugated(bsm-61064R) at 1:250 overnight at 4°C, followed by conjugation to the SP Kit (Rabbit, SP-0023) and DAB (C-0010) staining.