

bs-2366R**[Primary Antibody]****HSD3B7 Rabbit pAb****Bioss**
ANTIBODIES

www.bioss.com.cn

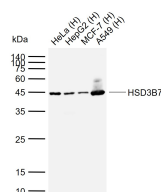
sales@bioss.com.cn

techsupport@bioss.com.cn

400-901-9800

— DATASHEET —

| | | |
|---|----------------------|--|
| Host: Rabbit | Isotype: IgG | Applications: WB (1:500-2000) ELISA (1:5000-10000) |
| Clonality: Polyclonal | | |
| GeneID: 80270 | SWISS: Q9H2F3 | Reactivity: Human, Rat (predicted: Mouse) |
| Target: HSD3B7 | | |
| Immunogen: KLH conjugated synthetic peptide derived from human HSD3B7: 101-200/369. | | |
| Purification: affinity purified by Protein A | | Predicted MW.: 41 kDa |
| Concentration: 1mg/ml | | Subcellular Location: Cell membrane ,Cytoplasm |
| Storage: 0.01M TBS (pH7.4) with 1% BSA, 0.02% Proclin300 and 50% Glycerol. Shipped at 4°C. Store at -20°C for one year. Avoid repeated freeze/thaw cycles. | | |
| Background: This gene encodes an enzyme which is involved in the initial stages of the synthesis of bile acids from cholesterol and a member of the short-chain dehydrogenase/reductase superfamily. The encoded protein is a membrane-associated endoplasmic reticulum protein which is active against 7-alpha hydrosylated sterol substrates. Mutations in this gene are associated with a congenital bile acid synthesis defect which leads to neonatal cholestasis, a form of progressive liver disease. Multiple transcript variants encoding different isoforms have been found for this gene. [provided by RefSeq, Dec 2008]. | | |

— VALIDATION IMAGES —

Sample: Lane 1: Human HeLa cell lysates Lane 2: Human HepG2 cell lysates Lane 3: Human MCF-7 cell lysates Lane 4: Human A549 cell lysates
Primary: Anti-HSD3B7 (bs-2366R) at 1/1000 dilution Secondary: IRDye800CW Goat Anti-Rabbit IgG at 1/20000 dilution Predicted band size: 41 kDa Observed band size: 45 kDa