

bs-5053R

[Primary Antibody]

CSNK1G2 Rabbit pAb

BioSS
ANTIBODIES

www.bioss.com.cn

sales@bioss.com.cn

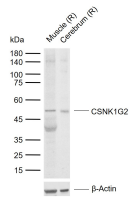
techsupport@bioss.com.cn

400-901-9800

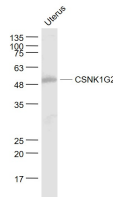
— DATASHEET —

Host: Rabbit	Isotype: IgG	Applications: WB (1:500-2000) Reactivity: Mouse, Rat (predicted: Human, Rabbit, Pig, Cow, Chicken, Dog, Horse) Predicted MW.: 47 kDa Subcellular Location: Cytoplasm
Clonality: Polyclonal		
GeneID: 1455	SWISS: P78368	
Target: CSNK1G2		
Immunogen: KLH conjugated synthetic peptide derived from human CSNK1G2: 211-320/415.		
Purification: affinity purified by Protein A		
Concentration: 1mg/ml		
Storage: 0.01M TBS (pH7.4) with 1% BSA, 0.02% Proclin300 and 50% Glycerol. Shipped at 4°C. Store at -20°C for one year. Avoid repeated freeze/thaw cycles.		
Background: Enables protein serine/threonine kinase activity. Involved in peptidyl-serine phosphorylation. Located in membrane. [provided by Alliance of Genome Resources, Apr 2022]		

— VALIDATION IMAGES —



Sample: Lane 1: Rat Muscle tissue lysates Lane 2:
Rat Cerebrum tissue lysates Primary: Anti-
CSNK1G2 (bs-5053R) at 1/1000 dilution
Secondary: IRDye800CW Goat Anti-Rabbit IgG at
1/20000 dilution Predicted band size: 47 kDa
Observed band size: 50 kDa



Sample: Uterus (Mouse) Lysate at 40 ug Primary:
Anti- CSNK1G2 (bs-5053R) at 1/1000 dilution
Secondary: IRDye800CW Goat Anti-Rabbit IgG at
1/20000 dilution Predicted band size: 47 kD
Observed band size: 49 kD