

bsm-61012R

[Primary Antibody]

Glucose 6 phosphate isomerase Recombinant Rabbit mAb

Bioss
ANTIBODIES

www.bioss.com.cn

sales@bioss.com.cn

techsupport@bioss.com.cn

400-901-9800

— DATASHEET —

Host: Rabbit

Isotype: IgG

Clonality: Recombinant

CloneNo.: 3A14

Target: Glucose 6 phosphate isomerase

Immunogen: A synthesized peptide derived from human GPI: 1-64/558.

Purification: affinity purified by Protein A

Concentration: 1mg/ml

Storage: 0.01M TBS(pH7.4) with 1% BSA, 0.02% Proclin300 and 50% Glycerol.
Shipped at 4°C. Store at -20 °C for one year. Avoid repeated freeze/thaw cycles.

Background: This gene belongs to the GPI family whose members encode multifunctional phosphoglucose isomerase proteins involved in energy pathways. The protein encoded by this gene is a dimeric enzyme that catalyzes the reversible isomerization of glucose-6-phosphate and fructose-6-phosphate. The protein functions in different capacities inside and outside the cell. In the cytoplasm, the gene product is involved in glycolysis and gluconeogenesis, while outside the cell it functions as a neurotrophic factor for spinal and sensory neurons. Defects in this gene are the cause of nonspherocytic hemolytic anemia and a severe enzyme deficiency can be associated with hydrops fetalis, immediate neonatal death and neurological impairment. [provided by RefSeq, Jul 2008].

Applications: WB (1:500-2000)

IHC-P (1:100-500)

IHC-F (1:100-500)

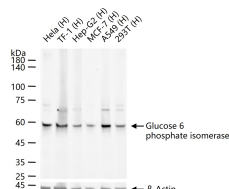
IF (1:100-500)

Reactivity: Human

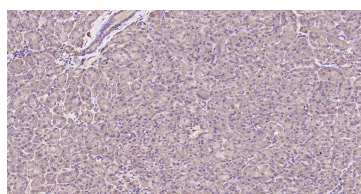
Predicted MW.: 63 Da

Subcellular Location: Secreted ,Cytoplasm

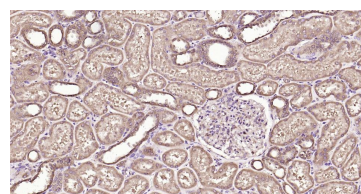
— VALIDATION IMAGES —



25 ug total protein per lane of various lysates (see on figure) probed with Glucose 6 phosphate isomerase monoclonal antibody, unconjugated (bsm-61012R) at 1:1000 dilution and 4°C overnight incubation. Followed by conjugated secondary antibody incubation at r.t. for 60 min.



Paraformaldehyde-fixed, paraffin embedded Human Pancreas; Antigen retrieval by boiling in sodium citrate buffer (pH6.0) for 15 min; Antibody incubation with Glucose 6 phosphate isomerase Monoclonal Antibody, Unconjugated(bsm-61012R) at 1:250 overnight at 4°C, followed by conjugation to the SP Kit (Rabbit, SP-0023) and DAB (C-0010) staining.



Paraformaldehyde-fixed, paraffin embedded Human Kidney; Antigen retrieval by boiling in sodium citrate buffer (pH6.0) for 15 min; Antibody incubation with Glucose 6 phosphate isomerase Monoclonal Antibody, Unconjugated(bsm-61012R) at 1:250 overnight at 4°C, followed by conjugation to the SP Kit (Rabbit, SP-0023) and DAB (C-0010) staining.