

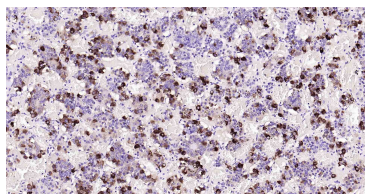
bsm-61006R**[Primary Antibody]****FSH beta Recombinant Rabbit mAb****BioSS**
ANTIBODIES

www.bioss.com.cn

sales@bioss.com.cn

techsupport@bioss.com.cn

400-901-9800

— DATASHEET —**Host:** Rabbit**Isotype:** IgG**Clonality:** Recombinant**CloneNo.:** 1E12**Target:** FSH beta**Immunogen:** A synthesized peptide derived from human FSH beta: 30-84.**Purification:** affinity purified by Protein A**Concentration:** 1mg/ml**Storage:** 0.01M TBS(pH7.4) with 1% BSA, 0.02% Proclin300 and 50% Glycerol.
Shipped at 4°C. Store at -20 °C for one year. Avoid repeated freeze/thaw cycles.**Background:** The pituitary glycoprotein hormone family includes follicle-stimulating hormone, luteinizing hormone, chorionic gonadotropin, and thyroid-stimulating hormone. All of these glycoproteins consist of an identical alpha subunit and a hormone-specific beta subunit. This gene encodes the beta subunit of follicle-stimulating hormone. In conjunction with luteinizing hormone, follicle-stimulating hormone induces egg and sperm production. Alternative splicing results in two transcript variants encoding the same protein. [provided by RefSeq, Jul 2008]**Applications:** **WB** (1:1000-2000)**IHC-P** (1:50-200)**IHC-F** (1:50-200)**IF** (1:50-200)**IP** (1:50)**Reactivity:** Human (predicted: Rabbit)**Predicted
MW.:** 15 kDa**Subcellular
Location:** Secreted**— VALIDATION IMAGES —**

Paraformaldehyde-fixed, paraffin embedded
Human pituitary gland; Antigen retrieval by
boiling in sodium citrate buffer (pH6.0) for 15
min; Antibody incubation with FSH beta
Monoclonal Antibody,
Unconjugated(bsm-61006R) at 1:100 overnight
at 4°C, followed by conjugation to the SP Kit
(Rabbit, SP-0023) and DAB (C-0010) staining.