

bsm-61001R**[Primary Antibody]****Bioss**
ANTIBODIES

www.bioss.com.cn

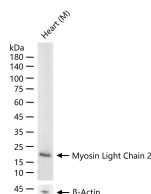
sales@bioss.com.cn

techsupport@bioss.com.cn

400-901-9800

Myosin Light Chain 2 Recombinant Rabbit mAb**— DATASHEET —**

Host: Rabbit	Isotype: IgG	Applications: WB (1:500-2000) Reactivity: Mouse (predicted: Human, Rat) Predicted MW.: 20 kDa Subcellular Location: Cytoplasm
Clonality: Recombinant	CloneNo.: 12D4	
Target: Myosin Light Chain 2		
Immunogen: A synthesized peptide derived from human Myosin light chain 2: 100-166/166.		
Purification: affinity purified by Protein A		
Concentration: 1mg/ml		
Storage: 0.01M TBS(pH7.4) with 1% BSA, 0.02% Proclin300 and 50% Glycerol. Shipped at 4°C. Store at -20 °C for one year. Avoid repeated freeze/thaw cycles.		
Background: This gene encodes the regulatory light chain associated with cardiac myosin beta (or slow) heavy chain. Ca ²⁺ triggers the phosphorylation of regulatory light chain that in turn triggers contraction. Mutations in this gene are associated with mid-left ventricular chamber type hypertrophic cardiomyopathy. [provided by RefSeq, Jul 2008]		

— VALIDATION IMAGES —

25 ug total protein per lane of various lysates
(see on figure) probed with Myosin Light Chain 2
monoclonal antibody, unconjugated
(bsm-61001R) at 1:2000 dilution and 4°C
overnight incubation. Followed by conjugated
secondary antibody incubation at r.t. for 60 min.