

## KCNK18 Rabbit pAb

Catalog Number: bs-16901R

Target Protein: KCNK18

Concentration: 1mg/ml

Form: Liquid

Host: Rabbit

Clonality: Polyclonal

Isotype: IgG

Applications: WB (1:500-2000)

Reactivity: Mouse, Rat (predicted:Human, Sheep)

Predicted MW: 44 kDa

Subcellular Cell membrane

Locations:

Entrez Gene: 338567

Swiss Prot: Q7Z418

Source: KLH conjugated synthetic peptide derived from human KCNK18: 201-300/384.

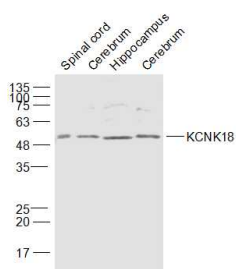
Purification: affinity purified by Protein A

Storage: 0.01M TBS (pH7.4) with 1% BSA, 0.02% Proclin300 and 50% Glycerol.

Shipped at 4°C. Store at -20°C for one year. Avoid repeated freeze/thaw cycles.

**Background:** Potassium channels play a role in many cellular processes including maintenance of the action potential, muscle contraction, hormone secretion, osmotic regulation, and ion flow. This gene encodes a member of the superfamily of potassium channel proteins containing two pore-forming P domains and the encoded protein functions as an outward rectifying potassium channel. A mutation in this gene has been found to be associated with migraine with aura.[provided by RefSeq, Jan 2011]

### VALIDATION IMAGES



Sample: Spinal cord (Mouse) Lysate at 40 ug Cerebrum (Mouse) Lysate at 40 ug Hippocampus (Mouse) Lysate at 40 ug Cerebrum (Rat) Lysate at 40 ug Primary: Anti-KCNK18 (bs-16901R) at 1/1000 dilution Secondary: IRDye800CW Goat Anti-Rabbit IgG at 1/20000 dilution Predicted band size: 44 kD Observed band size: 49 kD