

bs-1867R**[Primary Antibody]****BioSS**
ANTIBODIES

www.bioss.com.cn

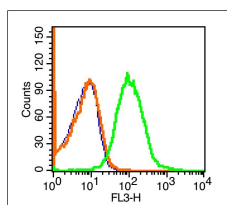
sales@bioss.com.cn

techsupport@bioss.com.cn

400-901-9800

PD-1 Rabbit pAb**— DATASHEET —**

Host: Rabbit	Isotype: IgG	Applications: Flow-Cyt (1µg /test)
Clonality: Polyclonal		Reactivity: Human, Mouse, Rat
GeneID: 5133	SWISS: Q15116	
Target: PD-1		
Immunogen: KLH conjugated synthetic peptide derived from human PD-1: 201-288/288.		Predicted MW.: 32 kDa
Purification: affinity purified by Protein A		Subcellular Location: Cell membrane
Concentration: 1mg/ml		
Storage: 0.01M TBS (pH7.4) with 1% BSA, 0.02% Proclin300 and 50% Glycerol. Shipped at 4°C. Store at -20°C for one year. Avoid repeated freeze/thaw cycles.		
Background: Programmed cell death protein 1 (PDCD1) is an immune-inhibitory receptor expressed in activated T cells; it is involved in the regulation of T-cell functions, including those of effector CD8+ T cells. In addition, this protein can also promote the differentiation of CD4+ T cells into T regulatory cells. PDCD1 is expressed in many types of tumors including melanomas, and has demonstrated to play a role in anti-tumor immunity. Moreover, this protein has been shown to be involved in safeguarding against autoimmunity, however, it can also contribute to the inhibition of effective anti-tumor and anti-microbial immunity. [provided by RefSeq, Aug 2020]		

— VALIDATION IMAGES —

Blank control (blue line): Mouse spleen cells (blue). Primary Antibody (green line): Rabbit Anti-PD-1/PE-CY7 Conjugated antibody (bs-1867R-PE-CY7) Dilution: 1µg/10⁶ cells; Isotype Control Antibody (orange line): Rabbit IgG-PE-CY7. Protocol The cells were fixed with 70% ice-cold methanol overnight at 4°C. The cells were then incubated in 1 X PBS/2%BSA/10% goat serum to block non-specific protein-protein interactions followed by the antibody for 15 min at room temperature. Cells stained with Primary Antibody for 30 min at room temperature. Acquisition of 20,000 events was performed.

— SELECTED CITATIONS —

- **[IF=6.832]** Aussel, Clotilde. et al. IL-1β primed mesenchymal stromal cells moderate hemorrhagic shock-induced organ injuries. Stem Cell Res Ther. 2021 Dec;12(1):1-16 FCM ;Rat. 34353366
- **[IF=6.639]** Ling Ding. et al. Inhibition of DCLK1 with DCLK1-IN-1 Suppresses Renal Cell Carcinoma Invasion and

Important Note: This product as supplied is intended for research use only, not for use in human, therapeutic or diagnostic applications.

Stemness and Promotes Cytotoxic T-Cell-Mediated Anti-Tumor Immunity. *Cancers*. 2021 Jan;13(22):5729 WB ;Human. 34830884

- **[IF=4.657]** He, Xiaojing. et al. Inhibition of PD-1 Alters the SHP1/2-PI3K/Akt Axis to Decrease M1 Polarization of Alveolar Macrophages in Lung Ischemia-Reperfusion Injury. *INFLAMMATION*. 2022 Nov;;1-16 WB ;Rat. 36357527
- **[IF=3.926]** Xin YAN. et al. PD-1/PD-L1 inhibition promotes hepatic regeneration in small-for-size liver following extended hepatectomy. *CYTOKINE*. 2022 Nov;159:156017 IHC,IF ;Rat. 10.1016/j.cyto.2022.156017
- **[IF=4.068]** Li Wang. et al. Radiotherapy upregulated immune checkpoints contribute to the development of second primary OSCC. *ORAL DIS*. 2023 May;; WB ;Rat. 37213085