

**bs-1866R****[ Primary Antibody ]****SPDEF Rabbit pAb****Bioss**  
**ANTIBODIES**

www.bioss.com.cn

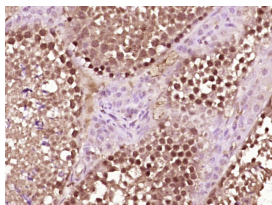
sales@bioss.com.cn

techsupport@bioss.com.cn

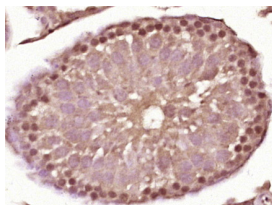
400-901-9800

**DATASHEET**

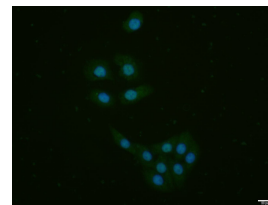
<b>Host:</b> Rabbit	<b>Isotype:</b> IgG	<b>Applications:</b> IHC-P (1:100-500) <b>IHC-F</b> (1:100-500) <b>IF</b> (1:100-500) <b>ICC/IF</b> (1:100)  <b>Reactivity:</b> Human, Mouse, Rat (predicted: Rabbit, Cow, Chicken, Dog, Horse)  <b>Predicted MW.:</b> 38 kDa  <b>Subcellular Location:</b> Nucleus
<b>Clonality:</b> Polyclonal		
<b>GeneID:</b> 25803	<b>SWISS:</b> Q95238	
<b>Target:</b> SPDEF		
<b>Immunogen:</b> KLH conjugated synthetic peptide derived from human PDEF: 251-335/335.		
<b>Purification:</b> affinity purified by Protein A		
<b>Concentration:</b> 1mg/ml		
<b>Storage:</b> 0.01M TBS (pH7.4) with 1% BSA, 0.02% Proclin300 and 50% Glycerol. Shipped at 4°C. Store at -20°C for one year. Avoid repeated freeze/thaw cycles.		
<b>Background:</b> SPDEF, also known as PDEF is an ETS transcription factor expressed in the prostate epithelial cells. It is thought to act as an androgen-independent transactivator of the prostate-specific antigen (PSA) promoter and also as a transcriptional activator for the SERPINB5 promoter. It is highly expressed in prostate carcinoma cells and is thought to be involved in the regulation of the prostate gland and/or prostate cancer development. It is also expressed in epithelial breast carcinoma.		

**VALIDATION IMAGES**

Paraformaldehyde-fixed, paraffin embedded (mouse testis tissue); Antigen retrieval by boiling in sodium citrate buffer (pH6.0) for 15min; Block endogenous peroxidase by 3% hydrogen peroxide for 20 minutes; Blocking buffer (normal goat serum) at 37°C for 30min; Antibody incubation with (SPDEF) Polyclonal Antibody, Unconjugated (bs-1866R) at 1:400 overnight at 4°C, followed by operating according to SP Kit(Rabbit) (sp-0023) instructions and DAB staining.



Paraformaldehyde-fixed, paraffin embedded (rat testis tissue); Antigen retrieval by boiling in sodium citrate buffer (pH6.0) for 15min; Block endogenous peroxidase by 3% hydrogen peroxide for 20 minutes; Blocking buffer (normal goat serum) at 37°C for 30min; Antibody incubation with (SPDEF) Polyclonal Antibody, Unconjugated (bs-1866R) at 1:400 overnight at 4°C, followed by operating according to SP Kit(Rabbit) (sp-0023) instructions and DAB staining.



MCF-7 cell; 4% Paraformaldehyde-fixed; Triton X-100 at room temperature for 20 min; Blocking buffer (normal goat serum, C-0005) at 37°C for 20 min; Antibody incubation with (SPDEF) polyclonal Antibody, Unconjugated (bs-1866R) 1:100, 90 minutes at 37°C; followed by a conjugated Goat Anti-Rabbit IgG antibody at 37°C for 90 minutes, DAPI (blue, C02-04002) was used to stain the cell nuclei.

**SELECTED CITATIONS**

- **[IF=8.2]** Min, Eun-Kyung. et al. Advanced Lung-on-a-Chip Technology: Mimicking the Complex Human Lung Microenvironment. INTERNATIONAL JOURNAL OF BIOLOGICAL SCIENCES. 2025 Jan 1; 21(1):17-39. IF ; Human. 39744426