

**bs-20263R****[ Primary Antibody ]****Pescadillo Rabbit pAb****Bioss**  
**ANTIBODIES**

www.bioss.com.cn

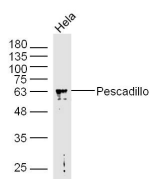
sales@bioss.com.cn

techsupport@bioss.com.cn

400-901-9800

**— DATASHEET —**

<b>Host:</b> Rabbit	<b>Isotype:</b> IgG	<b>Applications:</b> WB (1:500-2000)
<b>Clonality:</b> Polyclonal		<b>Reactivity:</b> Human (predicted: Mouse, Rat, Rabbit, Pig, Sheep, Cow)
<b>GeneID:</b> 23481	<b>SWISS:</b> O00541	<b>Predicted MW.:</b> 68 kDa
<b>Target:</b> Pescadillo		<b>Subcellular Location:</b> Nucleus
<b>Immunogen:</b> KLH conjugated synthetic peptide derived from human Pescadillo: 21-120/588.		
<b>Purification:</b> affinity purified by Protein A		
<b>Concentration:</b> 1mg/ml		
<b>Storage:</b> Preservative: 0.02% Proclin300, Constituents: 1% BSA, 0.01M PBS, pH7.4. Shipped at 4°C. Store at -20°C for one year. Avoid repeated freeze/thaw cycles.		
<b>Background:</b> Pescadillo may play a crucial role in cell proliferation and may be necessary for oncogenic transformation and tumor progression. The protein is abnormally elevated in malignant tumors of astrocytic origin. It is a strongly conserved gene containing a BRCT domain that is essential for the activity of this gene product.		

**— VALIDATION IMAGES —**

Sample: HeLa(human)cell Lysate at 40 ug  
Primary: Anti-Pescadillo(bs-20263R)at 1/300  
dilution Secondary: IRDye800CW Goat Anti-RabbitIgG at 1/20000 dilution Predicted band size: 68kD Observed band size: 63kD