

---

## Integrin alpha-3 heavy chain Rabbit pAb

Catalog Number: bs-6328R

Target Protein: Integrin alpha-3 heavy chain

Concentration: 1mg/ml

Form: Liquid

Host: Rabbit

Clonality: Polyclonal

Isotype: IgG

Applications: WB (1:500-2000)

Reactivity: Mouse (predicted:Human, Rat, Rabbit, Pig, Sheep, Cow, Dog)

Predicted MW: 93/114 kDa

Entrez Gene: 3675

Swiss Prot: P26006

Source: KLH conjugated synthetic peptide derived from human Integrin alpha-3 heavy chain:  
33-100/1051.

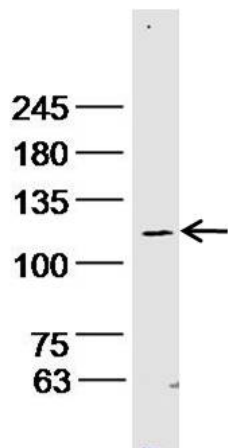
Purification: affinity purified by Protein A

Storage: Preservative: 0.02% Proclin300, Constituents: 1% BSA, 0.01M PBS, pH7.4.  
Shipped at 4°C. Store at -20°C for one year. Avoid repeated freeze/thaw cycles.

Background: The protein encoded by this gene belongs to the family of integrins. Integrins are heterodimeric integral membrane proteins composed of an alpha chain and a beta chain, and function as cell surface adhesion molecules. This gene encodes alpha 3 subunit, which undergoes post-translational cleavage in the extracellular domain to yield disulfide-linked light and heavy chains that join with beta 1 subunit to form an integrin that interacts with many extracellular-matrix proteins. Alternatively spliced transcript variants encoding different isoforms have been identified for this gene. [provided by RefSeq, Oct 2008]

### VALIDATION IMAGES

---



Sample: Cerebrum(Mouse) Tissue Lysate at 30 ug Primary: Anti-ITGA3 (bs-6328R) at 1/300 dilution  
Secondary: IRDye800CW Goat Anti-Rabbit IgG at 1/20000 dilution Predicted band size: 93,114 kD Observed  
band size: 114 kD