

bs-4429R**[Primary Antibody]****PTPLB Rabbit pAb****BioSS**
ANTIBODIES

www.bioss.com.cn

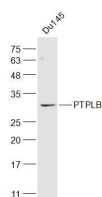
sales@bioss.com.cn

techsupport@bioss.com.cn

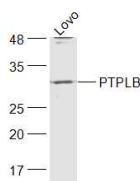
400-901-9800

— DATASHEET —

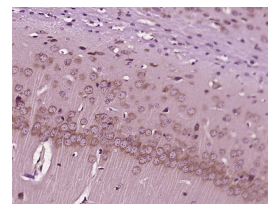
Host: Rabbit	Isotype: IgG	Applications: WB (1:500-2000)
Clonality: Polyclonal		IHC-P (1:100-500)
GeneID: 201562	SWISS: Q6Y1H2	IHC-F (1:100-500)
Target: PTPLB		IF (1:100-500)
Immunogen: KLH conjugated synthetic peptide derived from human PTPLB: 181-254/254. < Cytoplasmic >		Reactivity: Human, Mouse
Purification: affinity purified by Protein A		
Concentration: 1mg/ml		Predicted MW.: 28 kDa
Storage: Preservative: 0.02% Proclin300, Constituents: 1% BSA, 0.01M PBS, pH7.4. Shipped at 4°C. Store at -20°C for one year. Avoid repeated freeze/thaw cycles.		Subcellular Location: Cytoplasm
Background: The protein encoded by this gene can catalyze the third step (dehydration) in the conversion of long chain fatty acids to very long chain fatty acids. The encoded protein localizes to the endoplasmic reticulum membrane. [provided by RefSeq, Jul 2016]		

— VALIDATION IMAGES —

Sample: Du145(Human) Cell Lysate at 30 ug
 Primary: Anti-PTPLB (bs-4429R) at 1/300 dilution
 Secondary: IRDye800CW Goat Anti-Rabbit IgG at 1/20000 dilution Predicted band size: 28 kD
 Observed band size: 28 kD



Sample: LOVO(Human) Cell Lysate at 30 ug
 Primary: Anti-PTPLB (bs-4429R) at 1/300 dilution
 Secondary: IRDye800CW Goat Anti-Rabbit IgG at 1/20000 dilution Predicted band size: 28 kD
 Observed band size: 28 kD



Paraformaldehyde-fixed, paraffin embedded (Mouse brain); Antigen retrieval by boiling in sodium citrate buffer (pH6.0) for 15min; Block endogenous peroxidase by 3% hydrogen peroxide for 20 minutes; Blocking buffer (normal goat serum) at 37°C for 30min; Antibody incubation with (PTPLB) Polyclonal Antibody, Unconjugated (bs-4429R) at 1:500 overnight at 4°C, followed by a conjugated secondary (sp-0023) for 20 minutes and DAB staining.