

PTPLAD1 Rabbit pAb

Catalog Number: bs-8693R

Target Protein: PTPLAD1

Concentration: 1mg/ml

Form: Liquid

Host: Rabbit

Clonality: Polyclonal

Isotype: IgG

Applications: IHC-P (1:100-500), IHC-F (1:100-500), IF (1:100-500)

Reactivity: Mouse (predicted:Human, Rat, Rabbit, Pig, Sheep, Cow, Dog, Horse)

Predicted MW: 43 kDa

Entrez Gene: 51495

Swiss Prot: Q9P035

Source: KLH conjugated synthetic peptide derived from human PTPLAD1: 1-100/362.

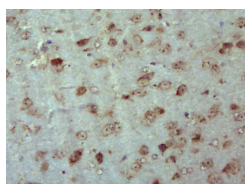
Purification: affinity purified by Protein A

Storage: Preservative: 0.02% Proclin300, Constituents: 1% BSA, 0.01M PBS, pH7.4.

Shipped at 4°C. Store at -20°C for one year. Avoid repeated freeze/thaw cycles.

Background: PTPLAD1 is a component of Rac1-signaling pathways leading to the modulation of gene expression. It potentiates different effects of the small GTPase Rac1, such as c-Jun N-terminal kinase activation and transcriptional activity of nuclear factor kappaB (NF-kappaB). It plays a crucial role in HCV RNA replication and the propagation of JFH1 virus through interaction with viral and host proteins.

VALIDATION IMAGES



Paraformaldehyde-fixed, paraffin embedded (Mouse brain); Antigen retrieval by boiling in sodium citrate buffer (pH6.0) for 15min; Block endogenous peroxidase by 3% hydrogen peroxide for 20 minutes; Blocking buffer (normal goat serum) at 37°C for 30min; Antibody incubation with (PTPLAD1) Polyclonal Antibody, Unconjugated (bs-8693R) at 1:400 overnight at 4°C, followed by operating according to SP Kit(Rabbit) (sp-0023) instructions and DAB staining.