

bs-18556R**[Primary Antibody]****ZCCHC7 Rabbit pAb****Bioss**
ANTIBODIES

www.bioss.com.cn

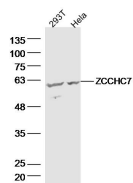
sales@bioss.com.cn

techsupport@bioss.com.cn

400-901-9800

— DATASHEET —

Host: Rabbit	Isotype: IgG	Applications: WB (1:500-2000)
Clonality: Polyclonal		Reactivity: Human
GeneID: 84186	SWISS: Q8N3Z6	
Target: ZCCHC7		
Immunogen: KLH conjugated synthetic peptide derived from human ZCCHC7: 401-500/543.		Predicted MW.: 63 kDa
Purification: affinity purified by Protein A		Subcellular Location: Nucleus
Concentration: 1mg/ml		
Storage: 0.01M TBS (pH7.4) with 1% BSA, 0.02% Proclin300 and 50% Glycerol. Shipped at 4°C. Store at -20°C for one year. Avoid repeated freeze/thaw cycles.		
Background: ZCCHC7 (Zinc Finger CCHC-Type Containing 7) is a Protein Coding gene. Among its related pathways are Deadenylation-dependent mRNA decay. GO annotations related to this gene include nucleic acid binding and poly(A) RNA binding.		

— VALIDATION IMAGES —

Sample: 293T Cell (Human) Lysate at 40 ug
Hela Cell (Human) Lysate at 40 ug
Primary: Anti-ZCCHC7 (bs-18556R) at 1/300 dilution
Secondary: IRDye800CW Goat Anti-Rabbit IgG at 1/20000 dilution
Predicted band size: 63 kD
Observed band size: 60 kD