

bs-1671R**[Primary Antibody]****CCR2 + CCR5 Rabbit pAb****Bioss**
ANTIBODIES

www.bioss.com.cn

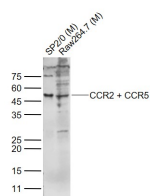
sales@bioss.com.cn

techsupport@bioss.com.cn

400-901-9800

— DATASHEET —

Host: Rabbit	Isotype: IgG	Applications: WB (1:500-2000)
Clonality: Polyclonal		Reactivity: Mouse (predicted: Human, Rat, Horse)
GeneID: 12772	SWISS: P51683	
Target: CCR2 + CCR5		Predicted MW.: 43 kDa
Immunogen: KLH conjugated synthetic peptide derived from mouse CCR2 and CCR5: 201-300/373.		Subcellular Location: Cell membrane
Purification: affinity purified by Protein A		
Concentration: 1mg/ml		
Storage: 0.01M TBS (pH7.4) with 1% BSA, 0.02% Proclin300 and 50% Glycerol. Shipped at 4°C. Store at -20°C for one year. Avoid repeated freeze/thaw cycles.		
Background: This gene encodes two isoforms of a receptor for monocyte chemoattractant protein-1, a chemokine which specifically mediates monocyte chemotaxis. Monocyte chemoattractant protein-1 is involved in monocyte infiltration in inflammatory diseases such as rheumatoid arthritis as well as in the inflammatory response against tumors. The receptors encoded by this gene mediate agonist-dependent calcium mobilization and inhibition of adenylyl cyclase. This gene is located in the chemokine receptor gene cluster region. Two alternatively spliced transcript variants are expressed by the gene. [provided by RefSeq, Mar 2009].		

— VALIDATION IMAGES —

Sample: Lane 1: Sp2/0 (Mouse) Cell Lysate at 30 ug
Lane 2: Raw264.7 (Mouse) Cell Lysate at 30 ug
Primary: Anti-CCR2 + CCR5 (bs-1671R) at 1/1000 dilution
Secondary: IRDye800CW Goat Anti-Rabbit IgG at 1/20000 dilution
Predicted band size: 42-50 kD
Observed band size: 50 kD