

bs-4755R**[Primary Antibody]****Bioss**
ANTIBODIES

www.bioss.com.cn

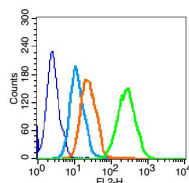
sales@bioss.com.cn

techsupport@bioss.com.cn

400-901-9800

CD19 Rabbit pAb**— DATASHEET —**

Host: Rabbit Clonality: Polyclonal GeneID: 930 Target: CD19 Immunogen: KLH conjugated synthetic peptide derived from human CD19: 151-250/556. < Extracellular > Purification: affinity purified by Protein A Concentration: 1mg/ml Storage: 0.01M TBS (pH7.4) with 1% BSA, 0.02% Proclin300 and 50% Glycerol. Shipped at 4°C. Store at -20°C for one year. Avoid repeated freeze/thaw cycles. Background: This gene encodes a member of the immunoglobulin gene superfamily. Expression of this cell surface protein is restricted to B cell lymphocytes. This protein is a reliable marker for pre-B cells but its expression diminishes during terminal B cell differentiation in antibody secreting plasma cells. The protein has two N-terminal extracellular Ig-like domains separated by a non-Ig-like domain, a hydrophobic transmembrane domain, and a large C-terminal cytoplasmic domain. This protein forms a complex with several membrane proteins including complement receptor type 2 (CD21) and tetraspanin (CD81) and this complex reduces the threshold for antigen-initiated B cell activation. Activation of this B-cell antigen receptor complex activates the phosphatidylinositol 3-kinase signalling pathway and the subsequent release of intracellular stores of calcium ions. This protein is a target of chimeric antigen receptor (CAR) T-cells used in the treatment of lymphoblastic leukemia. Mutations in this gene are associated with the disease common variable immunodeficiency 3 (CVID3) which results in a failure of B-cell differentiation and impaired secretion of immunoglobulins. CVID3 is characterized by hypogammaglobulinemia, an inability to mount an antibody response to antigen, and recurrent bacterial infections. Alternative splicing results in multiple transcript variants encoding distinct isoforms. [provided by RefSeq, Jul 2020]	Isotype: IgG SWISS: P15391 Applications: Flow-Cyt (1µg /Test) Reactivity: Human, Mouse (predicted: Rat, Pig, GuineaPig) Predicted MW.: 59 kDa Subcellular Location: Cell membrane
---	---

— VALIDATION IMAGES —

Blank control (blue line): HL60 cells (fixed with 70% methanol (Overnight at 4°C)). Primary Antibody (green line): Rabbit Anti-CD19 antibody (bs-4755R), Dilution: 0.2 µg /10⁶ cells; Isotype Control Antibody (orange line): Rabbit IgG . Secondary Antibody (white blue line): Goat anti-rabbit IgG-PE, Dilution: 1µg /test.

— SELECTED CITATIONS —

Important Note: This product as supplied is intended for research use only, not for use in human, therapeutic or diagnostic applications.

- **[IF=13.2]** Hongda Wang. et al. Engineering injectable composite scaffolds for enhanced bone healing: Integration of stem cells, hydrogels, and microspheres. CHEM ENG J. 2025 Feb;;160593 FC ;Human. 10.1016/j.cej.2025.160593
- **[IF=6]** Zhuo Tao. et al. Photodynamic Therapy of LD4-Photosensitizer Attenuates the Acute Pneumonia Induced by Klebsiella pneumoniae. ACS PHARMACOL TRANSL. 2024;XXXX(XXX):XXX-XXX IHC ;Rat. 38633581
- **[IF=3.484]** Boon Ching Teet al. Xenogeneic mesenchymal stem cell transplantation for mandibular defect regeneration. Xenotransplantation . 2020 Sep;27(5):e12625. IHC ;rat. 32629548
- **[IF=0.976]** Sahiner et al. Impact of intravesical hyaluronic acid treatment on bladder inflammation in interstitial cystitis rat model. (2018) Int.Braz.J.Urol. 44:1014-1022 IHC ;Rat. 30044599
- **[IF=1.396]** Xiong Y et al. Functions of T-cell subsets and their related cytokines in the pathological processes of autoimmune encephalomyelitic mice.(2018) Int J Clin Exp Pathol;11(10):4817-4826. FCM,IHC ;Mouse. ISSN:1936-2625/IJCEP0080924