

bsm-43164M**[Primary Antibody]****PR3 Mouse mAb****Bioss**
ANTIBODIES

www.bioss.com.cn

sales@bioss.com.cn

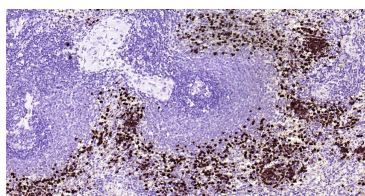
techsupport@bioss.com.cn

400-901-9800

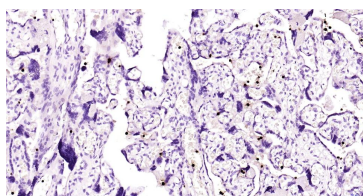
— DATASHEET —**Host:** Mouse**Isotype:** IgG**Clonality:** Monoclonal**CloneNo.:** 16B8**Target:** PR3**Purification:** affinity purified by Protein A**Storage:** 0.01M PBS(pH7.4)

Shipped at 4°C. Store at -20 °C for one year. Avoid repeated freeze/thaw cycles.

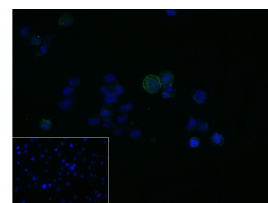
Background: The major features of Wegener granulomatosis are necrotizing granulomatous lesions, which most often affect the upper and lower airways and are associated with vasculitis, necrotizing glomerulonephritis and pulmonary capillaritis. The antigen responsible for this disease is Proteinase 3 (PR3, P29 or myeloblastin), which is one of the antibiotic proteins of neutrophilic granules belonging to the serine protease family. It is closely related to two others: Neutrophil Elastase and azurocidin. All three genes are expressed coordinately and their protein products are packaged together into azurophil granules during neutrophil differentiation. PR3 is a neutrophil protein which is able to cleave elastin and is involved in proliferation of human leukemia cells. PR3 is expressed specifically in immature myeloid cells and is a G-CSF-responsive protein critical to factor-independent growth. The genes for all three of the related serine protease family members are located in a cluster on the tip of the short arm of human chromosome 19.

Applications: IHC-P (1:100-500)**IHC-F** (1:100-500)**IF** (1:100-500)**ICC/IF** (1:100)**Reactivity:** Human**Predicted
MW.:** 28 kDa**Subcellular
Location:** Cell membrane**— VALIDATION IMAGES —**

Paraformaldehyde-fixed, paraffin embedded Human spleen; Antigen retrieval by boiling in sodium citrate buffer (pH6.0) for 15 min; Antibody incubation with PR3 Monoclonal Antibody, Unconjugated(bsm-43164M) at 1:200 overnight at 4°C, followed by conjugation to the bs-40296G-HRP and DAB (C-0010) staining.



Paraformaldehyde-fixed, paraffin embedded Human placenta; Antigen retrieval by boiling in sodium citrate buffer (pH6.0) for 15 min; Antibody incubation with PR3 Monoclonal Antibody, Unconjugated(bsm-43164M) at 1:200 overnight at 4°C, followed by conjugation to the bs-40296G-HRP and DAB (C-0010) staining.



4% Paraformaldehyde-fixed HL-60 (H) cell; Triton X-100 at r.t. for 20 min; Antibody incubation with (PR3) monoclonal Antibody, unconjugated (bsm-43164M) 1:100, 90 min at 37°C; followed by conjugated Goat Anti-Mouse IgG antibody (green, bs-60296G-FITC) at 37°C for 90 min, DAPI (blue, C02-04002) was used to stain the cell nuclei. PBS instead of the primary antibody was used as the blank control.