

bs-1132R**[Primary Antibody]****BioSS**
ANTIBODIES

www.bioss.com.cn

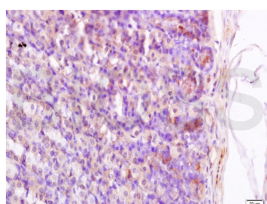
sales@bioss.com.cn

techsupport@bioss.com.cn

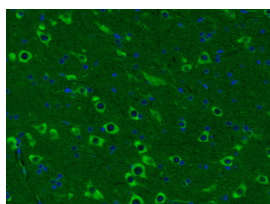
400-901-9800

Somatostatin 14/Somatostatin 28 Rabbit pAb**— DATASHEET —**

Host: Rabbit	Isotype: IgG	Applications: IHC-P (1:100-500)
Clonality: Polyclonal		IHC-F (1:100-500)
GeneID: 6750	SWISS: P61278	IF (1:200-800)
Target: Somatostatin 14/Somatostatin 28		Reactivity: Mouse, Rat (predicted: Human, Pig, Sheep, Cow, Chicken)
Immunogen: KLH conjugated synthetic peptide derived from human Somatostatin 28: 103-116/116.		Predicted MW.: 13 kDa
Purification: affinity purified by Protein A		Subcellular Location: Secreted
Concentration: 1mg/ml		
Storage: 0.01M TBS (pH7.4) with 1% BSA, 0.02% Proclin300 and 50% Glycerol. Shipped at 4°C. Store at -20°C for one year. Avoid repeated freeze/thaw cycles.		
Background: Somatostatin is a regulatory hormone that is expressed throughout the body and inhibits the release of numerous secondary hormones by binding to high-affinity G protein-coupled somatostatin receptors. This cyclic tetradecapeptide inhibits the secretion of many important hormones, including somatotropin (also designated growth hormone, or GH), insulin and glucagon. Somatostatin is found in both the hypothalamus and pancreas. Somatostatin is thought to be involved in the regulation of insulin synthesis. The hormone somatostatin has active 14 amino acid and 28 amino acid forms that are produced by alternate cleavage of the single preproprotein encoded by this gene. In the cerebellum, Somatostatin-14 and Somatostatin-28 are highly expressed at birth and in the adult stage, respectively. Somatostatin affects rates of neurotransmission in the central nervous system and proliferation of both normal and tumorigenic cells. The gene encoding Somatostatin maps to human chromosome 3q28.		

— VALIDATION IMAGES —

Tissue/cell: rat stomach tissue; 4% Paraformaldehyde-fixed and paraffin-embedded; Antigen retrieval: citrate buffer (0.01M, pH 6.0), Boiling bathing for 15min; Block endogenous peroxidase by 3% Hydrogen peroxide for 30min; Blocking buffer (normal goat serum, C-0005) at 37°C for 20 min; Incubation: Anti-Somatostatin/GRIH Polyclonal Antibody, Unconjugated (bs-1132R) 1:200, overnight at 4°C, followed by conjugation to the secondary antibody (SP-0023) and DAB (C-0010) staining



Paraformaldehyde-fixed, paraffin embedded (Mouse brain); Antigen retrieval by boiling in sodium citrate buffer (pH6.0) for 15min; Block endogenous peroxidase by 3% hydrogen peroxide for 20 minutes; Blocking buffer (normal goat serum) at 37°C for 30min; Antibody incubation with (Somatostatin 28) Polyclonal Antibody, Unconjugated (bs-1132R) at 1:400 overnight at 4°C, followed by a conjugated Goat Anti-Rabbit IgG antibody (bs-0295G-FITC) for 90 minutes, and DAPI for nuclei staining.

— SELECTED CITATIONS —

- **[IF=4.26]** Okita et al. Modified Western blotting for insulin and other diabetes-associated peptide hormones. (2017) Sci.Re. 7:6949 WB ;Mouse. 28761041

Important Note: This product as supplied is intended for research use only, not for use in human, therapeutic or diagnostic applications.

- **[IF=0.392]** Yildiz, M.. et al. The Effect of Chronic Intermittent Cold Exposure on Gastrin-, Somatostatin-, Secretin-, and Serotonin-Containing Cells in the Small Intestine of Rats. Biol Bull+. 2021 Dec;48(3):S95-S106 IHC ;Rat.
10.1134/S1062359022010174