

**bs-18554R****[ Primary Antibody ]****ZCCHC5 Rabbit pAb****Bioss**  
**ANTIBODIES**

www.bioss.com.cn

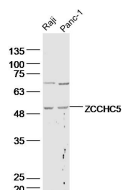
sales@bioss.com.cn

techsupport@bioss.com.cn

400-901-9800

**— DATASHEET —**

<b>Host:</b> Rabbit	<b>Isotype:</b> IgG	<b>Applications:</b> WB (1:500-2000)
<b>Clonality:</b> Polyclonal		<b>Reactivity:</b> Human
<b>GeneID:</b> 203430	<b>SWISS:</b> Q8N8U3	
<b>Target:</b> ZCCHC5		
<b>Immunogen:</b> KLH conjugated synthetic peptide derived from human ZCCHC5: 21-120/475.		<b>Predicted MW.:</b> 53 kDa
<b>Purification:</b> affinity purified by Protein A		<b>Subcellular Location:</b> Nucleus
<b>Concentration:</b> 1mg/ml		
<b>Storage:</b> 0.01M TBS (pH7.4) with 1% BSA, 0.02% Proclin300 and 50% Glycerol. Shipped at 4°C. Store at -20°C for one year. Avoid repeated freeze/thaw cycles.		
<b>Background:</b> This gene is a member of a family of gag-related retrotransposon genes. These genes appear to have lost the ability to retrotranspose; however, their open reading frames have remained intact, which may indicate that these genes have acquired new functions in the cell. [provided by RefSeq, Nov 2009]		

**— VALIDATION IMAGES —**

Sample: Raji Cell (Human) Lysate at 40 ug  
Panc-1 Cell (Human) Lysate at 40 ug  
Primary: Anti-ZCCHC5 (bs-18554R) at 1/300 dilution  
Secondary: IRDye800CW Goat Anti-Rabbit IgG at 1/20000 dilution  
Predicted band size: 53 kD  
Observed band size: 53 kD