

bsm-25492M**[Primary Antibody]****Osteocalcin Mouse mAb****BioSS**
ANTIBODIES

www.bioss.com.cn

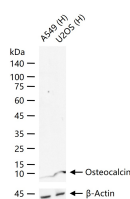
sales@bioss.com.cn

techsupport@bioss.com.cn

400-901-9800

— DATASHEET —

Host: Mouse	Isotype: IgG	Applications: WB (1:500-2000)
Clonality: Monoclonal	CloneNo.: 7A2	Reactivity: Human
Target: Osteocalcin		
Purification: affinity purified by Protein A		
Storage: 0.01M PBS(pH7.4) Shipped at 4°C. Store at -20 °C for one year. Avoid repeated freeze/thaw cycles.		Predicted MW.: 11 kDa
Background: Osteocalcin belongs to the osteocalcin/matrix Gla protein family and constitutes 1 to 2% of the total bone protein. It is a 49 amino acid single chain vitamin K dependent protein, made by osteoblasts, and is a major component of the noncollagenous bone matrix. Post translational modification by a vitamin K dependent carboxylase produces three gamma carboxyglutamic acid residues at positions 17, 21 and 24, giving it a high affinity for calcium. It also binds strongly to apatite.		Subcellular Location: Secreted

— VALIDATION IMAGES —

25 ug total protein per lane of various lysates (see on figure) probed with Osteocalcin monoclonal antibody, unconjugated (bsm-25492M) at 1:1000 dilution and 4°C overnight incubation. Followed by conjugated secondary antibody incubation at r.t. for 60 min.