

bs-11515R**[Primary Antibody]****ENTPD2 Rabbit pAb****BioSS**
ANTIBODIES

www.bioss.com.cn

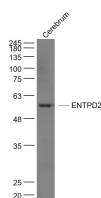
sales@bioss.com.cn

techsupport@bioss.com.cn

400-901-9800

— DATASHEET —

Host: Rabbit	Isotype: IgG	Applications: WB (1:500-2000)
Clonality: Polyclonal		Reactivity: Rat (predicted: Human, Mouse, Sheep, Cow, Chicken)
GeneID: 954	SWISS: Q9Y5L3	Predicted MW.: 54 kDa
Target: ENTDP2		Subcellular Location: Cell membrane
Immunogen: KLH conjugated synthetic peptide derived from human ENTDP2/CD39L1: 401-495/495.		
Purification: affinity purified by Protein A		
Concentration: 1mg/ml		
Storage: 0.01M TBS (pH7.4) with 1% BSA, 0.02% Proclin300 and 50% Glycerol. Shipped at 4°C. Store at -20°C for one year. Avoid repeated freeze/thaw cycles.		
Background: CD39, also known as ectonucleoside triphosphate diphosphohydrolase 1 (ENP1), is an integral membrane glycoprotein that acts as an extracellular nucleotide-hydrolyzing enzyme. CD39 inhibits ADP-induced platelet aggregation by hydrolyzing ADP to AMP and ultimately generating adenosine. Intracellular CD39 undergoes glycosylation at 6 N-glycosylation sites and translocates to the membrane in order to be an active enzyme. CD39L1 is a 495 amino acid multi-pass membrane protein that requires calcium and magnesium cofactors to hydrolyze ATP and other nucleotides in the regulation of purigenic neurotransmission. CD39L1 is expressed in kidney, colon, heart, testis, pancreas, brain, prostate, skeletal muscle, small intestine and ovaries. There are two isoforms of CD39L1 that are produced as a result of alternative splicing events.		

— VALIDATION IMAGES —

Sample: Cerebrum (Rat) Lysate at 40 ug Primary:
Anti- ENTDP2 (bs-11515R) at 1/1000 dilution
Secondary: IRDye800CW Goat Anti-Rabbit IgG at
1/20000 dilution Predicted band size: 54 kD
Observed band size: 54 kD