

**bs-18551R****[ Primary Antibody ]****ZCCHC24/C10orf56 Rabbit pAb****BioSS**  
**ANTIBODIES**

www.bioss.com.cn

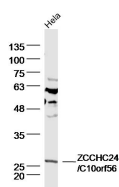
sales@bioss.com.cn

techsupport@bioss.com.cn

400-901-9800

**— DATASHEET —**

<b>Host:</b> Rabbit	<b>Isotype:</b> IgG	<b>Applications:</b> WB (1:500-2000)
<b>Clonality:</b> Polyclonal		<b>Reactivity:</b> Human (predicted: Mouse, Rat, Rabbit, Pig, Cow, Zebrafish, Chicken, Horse, Danio)
<b>GeneID:</b> 219654	<b>SWISS:</b> Q8N2G6	<b>Predicted MW.:</b> 27 kDa
<b>Target:</b> ZCCHC24/C10orf56		<b>Subcellular Location:</b> Nucleus
<b>Immunogen:</b> KLH conjugated synthetic peptide derived from human ZCCHC24/C10orf56: 101-200/241.		
<b>Purification:</b> affinity purified by Protein A		
<b>Concentration:</b> 1mg/ml		
<b>Storage:</b> 0.01M TBS (pH7.4) with 1% BSA, 0.02% Proclin300 and 50% Glycerol. Shipped at 4°C. Store at -20°C for one year. Avoid repeated freeze/thaw cycles.		
<b>Background:</b> ZCCHC24 is a 241 amino acid protein that contains one CCHC-type zinc finger, suggesting a role in transcriptional regulation. The gene encoding ZCCHC24 maps to human chromosome 10, which contains over 800 genes and 135 million nucleotides, making up nearly 4.5% of the human genome. PTEN is an important tumor suppressor gene located on chromosome 10 and, when defective, causes a genetic predisposition to cancer development known as Cowden syndrome. The chromosome 10 encoded gene ERCC6 is important for DNA repair and is linked to Cockayne syndrome which is characterized by extreme photosensitivity and premature aging. Tetrahydrobiopterin deficiency and a number of syndromes involving defective skull and facial bone fusion are also linked to chromosome 10. As with most trisomies, trisomy 10 is rare and is deleterious.		

**— VALIDATION IMAGES —**

Sample: HeLa (human) Cell Lysate at 40 ug  
Primary: Anti-ZCCHC24/C10orf56 (bs-18551R) at 1/300 dilution  
Secondary: IRDye800CW Goat Anti-Rabbit IgG at 1/20000 dilution  
Predicted band size: 27 kD  
Observed band size: 27 kD