

bs-3248R**[Primary Antibody]****phospho-LKB1 (Ser334) Rabbit pAb****Bioss**
ANTIBODIES

www.bioss.com.cn

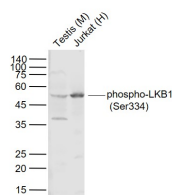
sales@bioss.com.cn

techsupport@bioss.com.cn

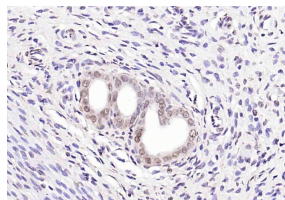
400-901-9800

— DATASHEET —**Host:** Rabbit**Isotype:** IgG**Clonality:** Polyclonal**GeneID:** 6794**SWISS:** Q15831**Target:** LKB1 (Ser334)**Immunogen:** KLH conjugated Synthesised phosphopeptide derived from human LKB1 around the phosphorylation site of Ser334: WR(p-S)MT.**Purification:** affinity purified by Protein A**Concentration:** 1mg/ml**Storage:** 0.01M TBS (pH7.4) with 1% BSA, 0.02% Proclin300 and 50% Glycerol.

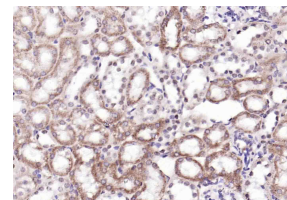
Shipped at 4°C. Store at -20°C for one year. Avoid repeated freeze/thaw cycles.

Background: This gene, which encodes a member of the serine/threonine kinase family, regulates cell polarity and functions as a tumor suppressor. Mutations in this gene have been associated with Peutz-Jeghers syndrome, an autosomal dominant disorder characterized by the growth of polyps in the gastrointestinal tract, pigmented macules on the skin and mouth, and other neoplasms. Alternate transcriptional splice variants of this gene have been observed but have not been thoroughly characterized. [provided by RefSeq, Jul 2008].**Applications:** WB (1:500-2000)**IHC-P** (1:100-500)**IHC-F** (1:100-500)**IF** (1:100-500)**Flow-Cyt** (1ug/Test)**Reactivity:** Human, Mouse, Rat**Predicted**
MW.: 48 kDa**Subcellular** Cell membrane ,Cytoplasm
Location: ,Nucleus**— VALIDATION IMAGES —**

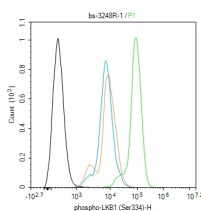
Sample: Lane 1: Testis (Mouse) Lysate at 40 ug
Lane 2: Jurkat (Human) Cell Lysate at 30 ug
Primary: Anti- phospho-LKB1 (Ser334)
(bs-3248R) at 1/1000 dilution Secondary:
IRDye800CW Goat Anti-Rabbit IgG at 1/20000
dilution Predicted band size: 50 kD Observed
band size: 50 kD



Paraformaldehyde-fixed, paraffin embedded
(mouse uterus); Antigen retrieval by boiling in
sodium citrate buffer (pH6.0) for 15min; Block
endogenous peroxidase by 3% hydrogen
peroxide for 20 minutes; Blocking buffer (normal
goat serum) at 37°C for 30min; Incubation with
(phospho-LKB1 (Ser334)) Polyclonal Antibody,
Unconjugated (bs-3248R) at 1:200 overnight at
4°C, followed by operating according to SP
Kit(Rabbit) (sp-0023) instructionsand DAB
staining.



Paraformaldehyde-fixed, paraffin embedded
(mouse kidney); Antigen retrieval by boiling in
sodium citrate buffer (pH6.0) for 15min; Block
endogenous peroxidase by 3% hydrogen
peroxide for 20 minutes; Blocking buffer (normal
goat serum) at 37°C for 30min; Incubation with
(phospho-LKB1 (Ser334)) Polyclonal Antibody,
Unconjugated (bs-3248R) at 1:200 overnight at
4°C, followed by operating according to SP
Kit(Rabbit) (sp-0023) instructionsand DAB
staining.



Blank control (black line) :HepG2. Primary
Antibody (green line): Rabbit Anti-phospho-LKB1
(Ser334) antibody (bs-3248R) Dilution:1ug/Test;
Secondary Antibody (white blue line) : Goat
anti-rabbit IgG-AF488 Dilution: 0.5ug/Test.

Important Note: This product as supplied is intended for research use only, not for use in human, therapeutic or diagnostic applications.

Isotype control (orange line) : Normal Rabbit IgG Protocol The cells were fixed with 4% PFA (10min at room temperature) and then permeabilized with 90% ice-cold methanol for 20 min at -20°C, The cells were then incubated in 5%BSA to block non-specific protein-protein interactions for 30 min at room temperature .Cells stained with Primary Antibody for 30 min at room temperature. The secondary antibody used for 40 min at room temperature. Acquisition of 20,000 events was performed.

— SELECTED CITATIONS —

- **[IF=5.2]** Long Chen. et al. Harnessing the potential of postbiotics derived from *Bacillus coagulans*: A promising avenue for obesity management via the gut-liver axis. *FOOD BIOSCI.* 2023 Dec;56:103108 WB ;Mouse. 10.1016/j.fbio.2023.103108