

bs-42353R**[Primary Antibody]****GLTP Rabbit pAb****Bioss**
ANTIBODIES

www.bioss.com.cn

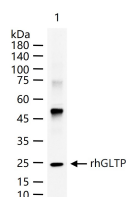
sales@bioss.com.cn

techsupport@bioss.com.cn

400-901-9800

— DATASHEET —

Host: Rabbit	Isotype: IgG	Applications: WB (1:500-2000)
Clonality: Polyclonal		Reactivity: Human (predicted: Mouse, Rat)
GeneID: 51228		
Target: GLTP		Predicted MW.: 24 kDa
Purification: affinity purified by Protein A		Subcellular Location: Cytoplasm
Concentration: 1mg/ml		
Storage: 0.01M TBS(pH7.4) with 1% BSA, 0.02% Proclin300 and 50% Glycerol. Shipped at 4°C. Store at -20 °C for one year. Avoid repeated freeze/thaw cycles.		
Background: The protein encoded by this gene is similar to bovine and porcine proteins which accelerate transfer of certain glycosphingolipids and glyceroglycolipids between membranes. It is thought to be a cytoplasmic protein. [provided by RefSeq, Jul 2008]		

— VALIDATION IMAGES —

20 ng rhGLTP protein (bs-42353P) per lane
probed with GLTP polyclonal antibody
respectively, unconjugated (bs-42353R) at
1:1000 dilution and 4°C overnight incubation.
Followed by corresponding conjugated
secondary antibody incubation at r.t. for 60 min.