

**bs-1064R****[ Primary Antibody ]****KLF4 Rabbit pAb**

**Bioss**  
ANTIBODIES

www.bioss.com.cn

sales@bioss.com.cn

techsupport@bioss.com.cn

400-901-9800

**DATASHEET****Host:** Rabbit**Isotype:** IgG**Clonality:** Polyclonal**GeneID:** 9314**SWISS:** O43474**Target:** KLF4**Immunogen:** KLH conjugated synthetic peptide derived from human KLF4: 415-513/513.**Purification:** affinity purified by Protein A**Concentration:** 1mg/ml**Storage:** 0.01M TBS (pH7.4) with 1% BSA, 0.02% Proclin300 and 50% Glycerol.

Shipped at 4°C. Store at -20°C for one year. Avoid repeated freeze/thaw cycles.

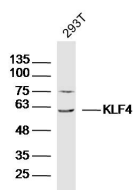
**Background:** KLF4 is a transcription factor that works with Sp1 to activate the Laminin gamma1 chain gene. It binds the CACCC core sequence. KLF4 may be involved in the differentiation of epithelial cells and may also function in the development of the skeleton and kidney. KLF4 also has roles as both an oncogene and a tumor suppressor.

**Applications:** **WB** (1:500-2000)  
**IHC-P** (1:50-200)  
**IHC-F** (1:50-200)  
**IF** (1:50-200)  
**Flow-Cyt** (1 $\mu$ g/Test)  
**ICC/IF** (1:100)

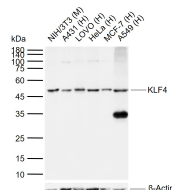
**Reactivity:** Human, Mouse, Rat

**Predicted**  
**MW.:** 56 kDa

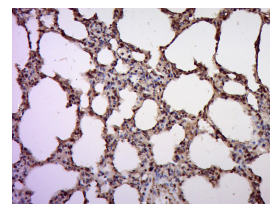
**Subcellular**  
**Location:** Nucleus

**VALIDATION IMAGES**

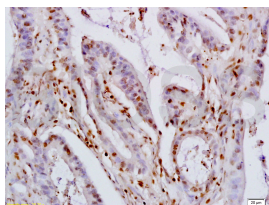
Sample: 293T (human) Cell Lysate at 40  $\mu$ g  
Primary: Anti-KLF4 (bs-1064R) at 1/300 dilution  
Secondary: IRDye800CW Goat Anti-Rabbit IgG at 1/20000 dilution Predicted band size: 56 kD  
Observed band size: 60 kD



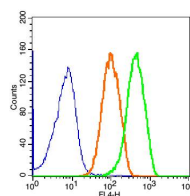
Sample: Lane 1: Mouse NIH/3T3 cell lysates Lane 2: Human A431 cell lysates Lane 3: Human LOVO cell lysates Lane 4: Human HeLa cell lysates Lane 5: Human MCF-7 cell lysates Lane 6: Human A549 cell lysates Primary: Anti-KLF4 (bs-1064R) at 1/1000 dilution Secondary: IRDye800CW Goat Anti-Rabbit IgG at 1/20000 dilution Predicted band size: 56 kDa Observed band size: 50 kDa



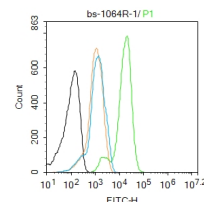
Paraformaldehyde-fixed, paraffin embedded (Rat lung); Antigen retrieval by boiling in sodium citrate buffer (pH6.0) for 15min; Block endogenous peroxidase by 3% hydrogen peroxide for 20 minutes; Blocking buffer (normal goat serum) at 37°C for 30min; Antibody incubation with (KLF4) Polyclonal Antibody, Unconjugated (bs-1064R) at 1:400 overnight at 4°C, followed by a conjugated secondary (sp-0023) for 20 minutes and DAB staining.



Tissue/cell: human colon carcinoma; 4% Paraformaldehyde-fixed and paraffin-embedded; Antigen retrieval: citrate buffer (0.01M, pH 6.0), Boiling bathing for 15min; Block endogenous peroxidase by 3% Hydrogen peroxide for 30min; Blocking buffer (normal goat serum, C-0005) at 37°C for 20 min; Incubation: Anti-KLF4 Polyclonal Antibody, Unconjugated (bs-1064R) 1:200, overnight at 4°C, followed by conjugation to the secondary



Blank control: MCF7 (blue). Primary Antibody: Rabbit Anti-KLF4 AF647 Conjugated antibody (bs-1064R-AF647), Dilution: 1 $\mu$ g in 100  $\mu$ L 1X PBS containing 0.5% BSA; Isotype Control Antibody: Rabbit IgG/AF647 (orange), used under the same conditions. Protocol The cells were fixed with 2% paraformaldehyde (10 min) and then permeabilized with ice-cold 90% methanol for 30 min on ice. The cells were washed twice with 1X PBS. The cells were incubated in 1X PBS



Blank control: K562. Primary Antibody (green line): Rabbit Anti-KLF4 antibody (bs-1064R) Dilution: 1 $\mu$ g / 10<sup>6</sup> cells; Isotype Control Antibody (orange line): Rabbit IgG. Secondary Antibody: Goat anti-rabbit IgG-FITC Dilution: 1 $\mu$ g / test. Protocol The cells were fixed with 4% PFA (10min at room temperature) and then permeabilized with 90% ice-cold methanol for 20 min at -20°C. The cells were then incubated in 5% BSA to block non-specific protein-protein

**Important Note:** This product as supplied is intended for research use only, not for use in human, therapeutic or diagnostic applications.

antibody(SP-0023) and DAB(C-0010) staining

containing 0.5% BSA + 1 0% goat serum (15 min)  
to block non-specific protein-protein  
interactions followed by the incubated with  
antibody (bs-1064R-AF647, 1µg /1x10<sup>6</sup> cells) for  
30 min on ice. Acquisition of 20,000 events was  
performed.

interactions for 30 min at room temperature  
.Cells stained with Primary Antibody for 30 min  
at room temperature. The secondary antibody  
used for 40 min at room temperature.  
Acquisition of 20,000 events was performed.

---

## — SELECTED CITATIONS —

- **[IF=9.1]** Datao Wang. et al. Antlers on does: An unexpected role of macrophages in deer biology. P NATL ACAD SCI USA. 2025 Jun;122(24):e2424448122 IF ;Deer. 40512783
- **[IF=7.525]** Ma Manting. et al. LncRNA-TBP mediates TATA-binding protein recruitment to regulate myogenesis and induce slow-twitch myofibers. CELL COMMUN SIGNAL. 2023 Dec;21(1):1-16 WB ;Chicken. 36635672
- **[IF=6.656]** Dong-qin Xu. et al. Pentoxifylline attenuates nonalcoholic fatty liver by inhibiting hepatic macrophage polarization to the M1 phenotype. PHYTOMEDICINE. 2022 Aug;;154368 FCM ;Mouse. 35994850
- **[IF=6.639]** Wataru Nakajima. et al. Epigenetic Priming with Decitabine Augments the Therapeutic Effect of Cisplatin on Triple-Negative Breast Cancer Cells through Induction of Proapoptotic Factor NOXA. Cancers. 2022 Jan;14(1):248 WB ;Human. 35008411
- **[IF=6.208]** Ling Ding. et al. Bufalin Inhibits Tumorigenesis, Stemness, and Epithelial&ndash;Mesenchymal Transition in Colorectal Cancer through a C-Kit/Slug Signaling Axis. INT J MOL SCI. 2022 Jan;23(21):13354 WB ;Human. 36362141