

**bs-25412R****[ Primary Antibody ]****LPCAT1 Rabbit pAb****Bioss**  
**ANTIBODIES**

www.bioss.com.cn

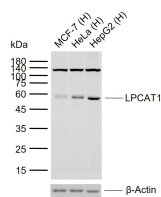
sales@bioss.com.cn

techsupport@bioss.com.cn

400-901-9800

**— DATASHEET —**

|  |                      |  |
|--|----------------------|--|
| <b>Host:</b> Rabbit  | <b>Isotype:</b> IgG  | <b>Applications:</b> WB (1:500-2000)   |
| <b>Clonality:</b> Polyclonal   |                      | <b>Reactivity:</b> Human               |
| <b>GeneID:</b> 79888   | <b>SWISS:</b> Q8NF37 |  |
| <b>Target:</b> LPCAT1  |                      |  |
| <b>Purification:</b> affinity purified by Protein A  |                      | <b>Predicted MW.:</b> 59 kDa           |
| <b>Concentration:</b> 1mg/ml   |                      | <b>Subcellular Location:</b> Cytoplasm |
| <b>Storage:</b> 0.01M TBS (pH7.4) with 1% BSA, 0.02% Proclin300 and 50% Glycerol.<br>Shipped at 4°C. Store at -20°C for one year. Avoid repeated freeze/thaw cycles.   |                      |  |
| <b>Background:</b> Lysophosphatidylcholine (LPC) acyltransferase (LPCAT; EC 2.3.1.23) catalyzes the conversion of LPC to phosphatidylcholine (PC) in the remodeling pathway of PC biosynthesis (Nakanishi et al., 2006 [PubMed 16704971]).[supplied by OMIM, May 2008] |                      |  |

**— VALIDATION IMAGES —**

Sample: Lane 1: Human MCF-7 cell lysates Lane  
2: Human HeLa cell lysates Lane 3: Human  
HepG2 cell lysates Primary: Anti-LPCAT1  
(bs-25412R) at 1/1000 dilution Secondary:  
IRDye800CW Goat Anti-Rabbit IgG at 1/20000  
dilution Predicted band size: 59 kDa Observed  
band size: 59 kDa