

**bs-25408R****[ Primary Antibody ]****CRBN Rabbit pAb****BioSS**  
**ANTIBODIES**

www.bioss.com.cn

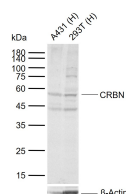
sales@bioss.com.cn

techsupport@bioss.com.cn

400-901-9800

**— DATASHEET —**

<b>Host:</b> Rabbit	<b>Isotype:</b> IgG	<b>Applications:</b> WB (1:500-2000)
<b>Clonality:</b> Polyclonal		<b>Reactivity:</b> Human (predicted: Mouse, Rat, Rabbit, Pig, Sheep, Cow, Chicken)
<b>GeneID:</b> 51185	<b>SWISS:</b> Q96SW2	
<b>Target:</b> CRBN		<b>Predicted MW.:</b> 51 kDa
<b>Purification:</b> affinity purified by Protein A		<b>Subcellular Location:</b> Cell membrane ,Cytoplasm ,Nucleus
<b>Concentration:</b> 1mg/ml		
<b>Storage:</b> 0.01M TBS (pH7.4) with 1% BSA, 0.02% Proclin300 and 50% Glycerol. Shipped at 4°C. Store at -20°C for one year. Avoid repeated freeze/thaw cycles.		
<b>Background:</b> CRBN is a 442 amino acid protein which is highly concentrated in human brain tissue. CRBN functions are thought to be related to energy metabolism, learning and memory. Localized to the cytoplasm, CRBN acts as a protease in mitochondria and is thought to regulate the assembly of KCNT1, as well as the surface expression of KCNT1 in brain regions known to affect memory and learning, such as the hippocampus. The gene encoding CRBN belongs to a family of ATP-dependent ion proteases that play a role in membrane trafficking and proteolysis. Defects in the CRBN gene are associated with mild mental retardation.		

**— VALIDATION IMAGES —**

Sample: Lane 1: Human A431 cell lysates Lane 2: Human 293T cell lysates  
Primary: Anti-CRBN (bs-25408R) at 1/500 dilution  
Secondary: IRDye800CW Goat Anti-Rabbit IgG at 1/20000 dilution  
Predicted band size: 51 kDa  
Observed band size: 55 kDa