

**bs-25403R****[ Primary Antibody ]****LPAR3 Rabbit pAb****BioSS**  
**ANTIBODIES**

www.bioss.com.cn

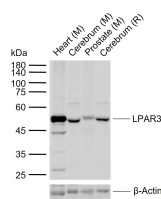
sales@bioss.com.cn

techsupport@bioss.com.cn

400-901-9800

**— DATASHEET —**

<b>Host:</b> Rabbit	<b>Isotype:</b> IgG	<b>Applications:</b> WB (1:500-2000)
<b>Clonality:</b> Polyclonal		<b>Reactivity:</b> Mouse, Rat (predicted: Human, Sheep, Cow, Horse)
<b>GeneID:</b> 23566	<b>SWISS:</b> Q9UBY5	
<b>Target:</b> LPAR3		<b>Predicted MW.:</b> 39 kDa
<b>Purification:</b> affinity purified by Protein A		<b>Subcellular Location:</b> Cell membrane
<b>Concentration:</b> 1mg/ml		
<b>Storage:</b> 0.01M TBS (pH7.4) with 1% BSA, 0.02% Proclin300 and 50% Glycerol. Shipped at 4°C. Store at -20°C for one year. Avoid repeated freeze/thaw cycles.		
<b>Background:</b> EDG7 is a member of the G protein-coupled receptor family, as well as the EDG family of proteins. This protein functions as a cellular receptor for lysophosphatidic acid and mediates lysophosphatidic acid-evoked calcium mobilization. This receptor couples predominantly to G(q/11) alpha proteins. EDG7 has been reported in human prostate, as well as rodent brain, kidney, lung, placenta, prostate, and testis. ESTs have been isolated from a normal prostate library, as well as cancer libraries of the head/neck, ovary, and thyroid.		

**— VALIDATION IMAGES —**

Sample: Lane 1: Mouse Heart tissue lysates Lane 2: Mouse Cerebrum tissue lysates Lane 3: Mouse Prostate tissue lysates Lane 4: Rat Cerebrum tissue lysates Primary: Anti-LPAR3 (bs-25403R) at 1/1000 dilution Secondary: IRDye800CW Goat Anti-Rabbit IgG at 1/20000 dilution Predicted band size: 39 kDa Observed band size: 48 kDa