

bsm-52190R**[Primary Antibody]****Phospho-PLK1 (Thr210) Recombinant Rabbit mAb****BioSS**
ANTIBODIES

www.bioss.com.cn

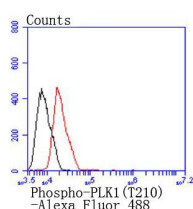
sales@bioss.com.cn

techsupport@bioss.com.cn

400-901-9800

— DATASHEET —**Host:** Rabbit**Isotype:** IgG**Clonality:** Recombinant**CloneNo.:** 2A10**GeneID:** 5347**SWISS:** P53350**Target:** Phospho-PLK1 (Thr210)**Immunogen:** KLH conjugated synthesised phosphopeptide derived from human PLK1 around the phosphorylation site of Thr210: KK(p-T)L.**Purification:** affinity purified by Protein A**Concentration:** 1mg/ml**Storage:** 0.01M TBS (pH7.4) with 1% BSA, 0.02% Proclin300 and 50% Glycerol.

Shipped at 4°C. Store at -20°C for one year. Avoid repeated freeze/thaw cycles.

Background: The Ser/Thr protein kinase encoded by this gene belongs to the CDC5/Polo subfamily. It is highly expressed during mitosis and elevated levels are found in many different types of cancer. Depletion of this protein in cancer cells dramatically inhibited cell proliferation and induced apoptosis; hence, it is a target for cancer therapy. [provided by RefSeq, Sep 2015]**Applications:** WB (1:500-1000)**IHC-P** (1:100-500)**IHC-F** (1:10-50)**IF** (1:10-50)**Flow-Cyt** (1:50)**ICC/IF** (1:10-50)**Reactivity:** Human**Predicted MW.:** 68 kDa**Subcellular Location:** Cytoplasm ,Nucleus**— VALIDATION IMAGES —**

Blank control: MCF-7. Primary Antibody (green line): Rabbit Anti-Phospho-PLK1(T210) antibody (bsm-52190R) Dilution: 1:50; Secondary Antibody : Goat anti-rabbit IgG-AF488 Dilution: 1:1000. Protocol The cells were fixed with 4% PFA (10min at room temperature)and then permeabilized with 90% ice-cold methanol for 20 min at -20°C. The cells were then incubated in 5%BSA to block non-specific protein-protein interactions for 30 min at room temperature .Cells stained with Primary Antibody for 30 min at room temperature. The secondary antibody used for 40 min at room temperature. Acquisition of 20,000 events was performed.