

**bs-17876R****[ Primary Antibody ]****MTHFD1L Rabbit pAb****BioSS**  
**ANTIBODIES**

www.bioss.com.cn

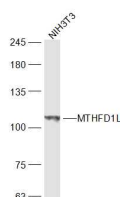
sales@bioss.com.cn

techsupport@bioss.com.cn

400-901-9800

**— DATASHEET —**

<b>Host:</b> Rabbit	<b>Isotype:</b> IgG	<b>Applications:</b> WB (1:500-2000)
<b>Clonality:</b> Polyclonal		
<b>GeneID:</b> 25902	<b>SWISS:</b> Q6UB35	
<b>Target:</b> MTHFD1L		
<b>Immunogen:</b> KLH conjugated synthetic peptide derived from human MTHFD1L: 801-900/978.		
<b>Purification:</b> affinity purified by Protein A		<b>Reactivity:</b> Human, Mouse (predicted: Rat, Rabbit, Horse)
<b>Concentration:</b> 1mg/ml		<b>Predicted MW.:</b> 103 kDa
<b>Storage:</b> 0.01M TBS (pH7.4) with 1% BSA, 0.02% Proclin300 and 50% Glycerol. Shipped at 4°C. Store at -20°C for one year. Avoid repeated freeze/thaw cycles.		<b>Subcellular Location:</b> Cytoplasm
<b>Background:</b> The protein encoded by this gene is involved in the synthesis of tetrahydrofolate (THF) in the mitochondrion. THF is important in the de novo synthesis of purines and thymidylate and in the regeneration of methionine from homocysteine. Several transcript variants encoding different isoforms have been found for this gene.[provided by RefSeq, Jun 2011]		

**— VALIDATION IMAGES —**

Sample: NIH3T3 (Mouse) Lysate at 30 ug  
Primary: Anti-MTHFD1L (bs-17876R) at 1/300  
dilution Secondary: IRDye800CW Goat Anti-  
Rabbit IgG at 1/20000 dilution Predicted band  
size: 103 kD Observed band size: 103 kD