

bs-3559R**[Primary Antibody]****BioSS**
ANTIBODIES

www.bioss.com.cn

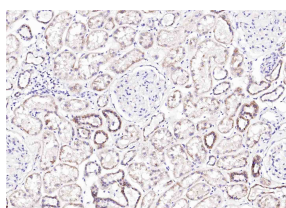
sales@bioss.com.cn

techsupport@bioss.com.cn

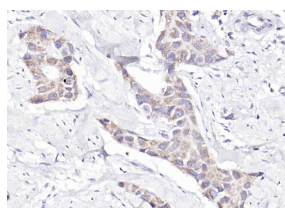
400-901-9800

Raptor Rabbit pAb**DATASHEET**

Host: Rabbit	Isotype: IgG	Applications: IHC-P (1:100-500) IHC-F (1:100-500) IF (1:100-500)
Clonality: Polyclonal		
GeneID: 57521	SWISS: Q8N122	
Target: Raptor		Reactivity: Human (predicted: Mouse, Rat, Pig, Sheep, Cow, Chicken, Horse)
Immunogen: KLH conjugated synthetic peptide derived from human Raptor: 101-200/1335.		
Purification: affinity purified by Protein A		Predicted MW.: 147 kDa
Concentration: 1mg/ml		Subcellular Location: Cytoplasm
Storage: 0.01M TBS (pH7.4) with 1% BSA, 0.02% Proclin300 and 50% Glycerol. Shipped at 4°C. Store at -20°C for one year. Avoid repeated freeze/thaw cycles.		
Background: mTOR controls cell growth, in part by regulating p70 S6 kinase alpha (p70alpha) and eukaryotic initiation factor 4E binding protein 1 (4EBP1). Raptor is a 150 kDa mTOR binding protein that also binds 4EBP1 and p70alpha. The binding of Raptor to mTOR is necessary for the mTOR-catalyzed phosphorylation of 4EBP1 in vitro, and it strongly enhances the mTOR kinase activity toward p70alpha. Rapamycin or amino acid withdrawal increases, whereas insulin strongly inhibits, the recovery of 4EBP1 and raptor on 7-methyl-GTP Sepharose. Partial inhibition of raptor expression by RNA interference (RNAi) reduces mTOR-catalyzed 4EBP1 phosphorylation in vitro. RNAi of C. elegans raptor yields an array of phenotypes that closely resemble those produced by inactivation of Ce-TOR. Thus, raptor is an essential scaffold for the mTOR-catalyzed phosphorylation of 4EBP1 and mediates TOR action in vivo.		

VALIDATION IMAGES

Paraformaldehyde-fixed, paraffin embedded Human Kidney; Antigen retrieval by boiling in sodium citrate buffer (pH6.0) for 15 min; Antibody incubation with Raptor Polyclonal Antibody, Unconjugated (bs-3559R) at 1:200 overnight at 4°C, followed by conjugation to the bs-0295G-HRP and DAB (C-0010) staining.



Paraformaldehyde-fixed, paraffin embedded Human Colon Cancer; Antigen retrieval by boiling in sodium citrate buffer (pH6.0) for 15 min; Antibody incubation with Raptor Polyclonal Antibody, Unconjugated (bs-3559R) at 1:200 overnight at 4°C, followed by conjugation to the bs-0295G-HRP and DAB (C-0010) staining.

SELECTED CITATIONS

- **[IF=4.192]** Chaochao Luo. et al. Glutamine Regulates Cell Growth and Casein Synthesis through the CYTHs/ARFGAP1-Arf1-mTORC1 Pathway in Bovine Mammary Epithelial Cells. J Agr Food Chem. 2021;XXXX(XXX):XXX-XXX WB ;Bovine. 34096300