

**bs-7004R****[ Primary Antibody ]****BioSS**  
**ANTIBODIES**

www.bioss.com.cn

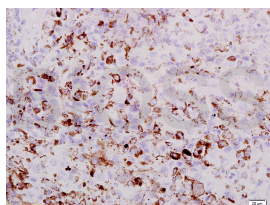
sales@bioss.com.cn

techsupport@bioss.com.cn

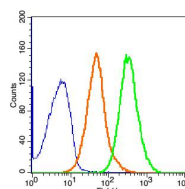
400-901-9800

**PRAME Rabbit pAb****— DATASHEET —**

<b>Host:</b> Rabbit	<b>Isotype:</b> IgG	<b>Applications:</b> IHC-P (1:100-500)
<b>Clonality:</b> Polyclonal		<b>IHC-F</b> (1:100-500)
<b>GeneID:</b> 23532	<b>SWISS:</b> P78395	<b>IF</b> (1:100-500)
<b>Target:</b> PRAME		<b>Flow-Cyt</b> (0.2ug/Test)
<b>Immunogen:</b> KLH conjugated synthetic peptide derived from human PRAME: 151-250/509.		<b>Reactivity:</b> Human, Mouse
<b>Purification:</b> affinity purified by Protein A		
<b>Concentration:</b> 1mg/ml		<b>Predicted MW.:</b> 56 kDa
<b>Storage:</b> 0.01M TBS (pH7.4) with 1% BSA, 0.02% Proclin300 and 50% Glycerol. Shipped at 4°C. Store at -20°C for one year. Avoid repeated freeze/thaw cycles.		<b>Subcellular Location:</b> Cell membrane ,Nucleus
<b>Background:</b> This gene encodes an antigen that is predominantly expressed in human melanomas and that is recognized by cytolytic T lymphocytes. It is not expressed in normal tissues, except testis. This expression pattern is similar to that of other CT antigens, such as MAGE, BAGE and GAGE. However, unlike these other CT antigens, this gene is also expressed in acute leukemias. Five alternatively spliced transcript variants encoding the same protein have been observed for this gene. [provided by RefSeq, Jul 2008]		

**— VALIDATION IMAGES —**

Tissue/cell: mouse lung tissue(Melanoma); 4% Paraformaldehyde-fixed and paraffin-embedded; Antigen retrieval: citrate buffer (0.01M, pH 6.0), Boiling bathing for 15min; Block endogenous peroxidase by 3% Hydrogen peroxide for 30min; Blocking buffer (normal goat serum, C-0005) at 37°C for 20 min; Incubation: Anti-PRAME Polyclonal Antibody, Unconjugated(bs-7004R) 1:200, overnight at 4°C, followed by conjugation to the secondary antibody(SP-0023) and DAB(C-0010) staining



Blank control(blue): Hela Cells(fixed with 2% paraformaldehyde (10 min) and then permeabilized with ice-cold 90% methanol for 30 min on ice). Primary Antibody: Rabbit Anti-PRAME/AF647 Conjugated antibody (bs-7004R-AF647), Dilution: 0.2µg in 100 µL 1X PBS containing 0.5% BSA; Isotype Control Antibody: Rabbit IgG/AF647(orange), used under the same conditions.

**— SELECTED CITATIONS —**

- **[IF=16.304]** Premal D. Lulla et al. The safety and clinical effects of administering a multiantigen-targeted T cell therapy to patients with multiple myeloma. IHC ;Human. 10.1126/scitranslmed.aaz3339
- **[IF=5.485]** Valentina Hoyos. et al. Multi-antigen-targeted T-cell therapy to treat patients with relapsed/refractory breast cancer. THER ADV MED ONCOL. 2022;(): IHC ;Human. 35860837