

bs-10764R**[Primary Antibody]****TM9SF1 Rabbit pAb****Bioss**
ANTIBODIES

www.bioss.com.cn

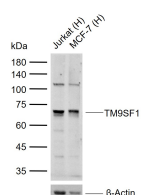
sales@bioss.com.cn

techsupport@bioss.com.cn

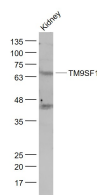
400-901-9800

— DATASHEET —

Host: Rabbit	Isotype: IgG	Applications: WB (1:500-2000)
Clonality: Polyclonal		Reactivity: Human, Mouse (predicted: Rat, Rabbit, Sheep, Cow, Dog, Horse)
GeneID: 10548	SWISS: O15321	
Target: TM9SF1		Predicted MW.: 66 kDa
Immunogen: KLH conjugated synthetic peptide derived from human TM9SF1: 51-150/606.		Subcellular Location: Cell membrane ,Cytoplasm
Purification: affinity purified by Protein A		
Concentration: 1mg/ml		
Storage: 0.01M TBS (pH7.4) with 1% BSA, 0.02% Proclin300 and 50% Glycerol. Shipped at 4°C. Store at -20°C for one year. Avoid repeated freeze/thaw cycles.		
Background: TM9SF1 (Transmembrane 9 superfamily member 1) may function as a channel, small molecule transporter or receptor.		

— VALIDATION IMAGES —

Sample: Lane 1: Human Jurkat cell lysates Lane
2: Human MCF-7 cell lysates Primary: Anti-
TM9SF1 (bs-10764R) at 1/1000 dilution
Secondary: IRDye800CW Goat Anti-Rabbit IgG at
1/20000 dilution Predicted band size: 66 kDa
Observed band size: 70 kDa



Sample: Kidney (Mouse) Lysate at 40 ug Primary:
Anti- TM9SF1 (bs-10764R) at 1/1000 dilution
Secondary: IRDye800CW Goat Anti-Rabbit IgG at
1/20000 dilution Predicted band size: 66 kD
Observed band size: 66 kD

— SELECTED CITATIONS —

- **[IF=10.849]** Zhuo, Wei. et al. m6Am methyltransferase PCIF1 is essential for aggressiveness of gastric cancer cells by inhibiting TM9SF1 mRNA translation. CELL DISCOV. 2022 May;8(1):1-17 WB,IHC ;Human,Mouse. 35597784