

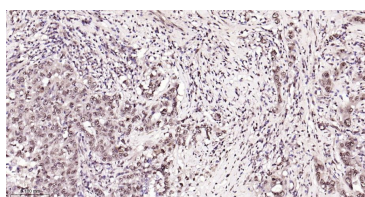
**bsm-55528R****[ Primary Antibody ]****Bioss**  
**ANTIBODIES**

www.bioss.com.cn

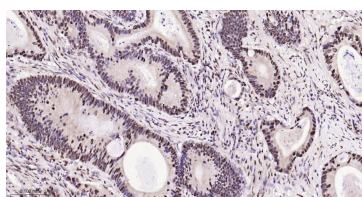
sales@bioss.com.cn

techsupport@bioss.com.cn

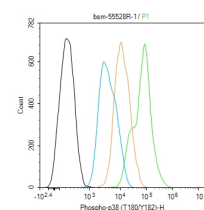
400-901-9800

**phospho-p38 (T180/Y182) Recombinant Rabbit mAb****— DATASHEET —****Host:** Rabbit**Isotype:** IgG**Clonality:** Recombinant**CloneNo.:** SB98**GeneID:** 1432**SWISS:** Q16539**Target:** p38 (T180/Y182)**Purification:** Affinity Purification**Storage:** PBS with 100 µg/ml BSA, 0.15% ProClin300 and 50% glycerol.  
Store at -20 °C for one year. Avoid repeated freeze/thaw cycles.**Background:** Serine/threonine kinase which acts as an essential component of the MAP kinase signal transduction pathway. MAPK12 is one of the four p38 MAPKs which play an important role in the cascades of cellular responses evoked by extracellular stimuli such as pro-inflammatory cytokines or physical stress leading to direct activation of transcription factors such as ELK1 and ATF2.**Applications:** WB (1:500-2000)**IHC-P** (1:100-500)**IHC-F** (1:100-500)**IF** (1:100-500)**Flow-Cyt** (1:50-100)**Reactivity:** Human, Mouse, Rat**Predicted  
MW.:** 38**Subcellular  
Location:** Cytoplasm ,Nucleus**— VALIDATION IMAGES —**

Paraformaldehyde-fixed, paraffin embedded Human Breast Cancer; Antigen retrieval by boiling in sodium citrate buffer (pH6.0) for 15 min; The section was incubated with Phospho-p38 (T180/Y182) Monoclonal Antibody, Unconjugated (bsm-55528R) at 1:200 overnight at 4°C, followed by conjugation to the bs-0295G-HRP and DAB (C-0010) staining.



Paraformaldehyde-fixed, paraffin embedded Human Colon Cancer; Antigen retrieval by boiling in sodium citrate buffer (pH6.0) for 15 min; The section was incubated with Phospho-p38 (T180/Y182) Monoclonal Antibody, Unconjugated (bsm-55528R) at 1:200 overnight at 4°C, followed by conjugation to the bs-0295G-HRP and DAB (C-0010) staining.



The HeLa ( treated with 200J/m2 UV-C then recovery for 30 min) (H) cells were fixed with 4% PFA (10 min at r.t.) and then permeabilized with 90% ice-cold methanol for 20 min at -20°C, the cells then were incubated in 5%BSA to block non-specific protein-protein interactions (30 min at r.t.). Primary Antibody (green): Rabbit Anti-Phospho-p38 (T180/Y182) antibody (bsm-55528R): 1:50-100; Secondary Antibody (white blue): Goat anti-Rabbit IgG-BF488 (bs-60295G-BF488): 1 µg/test. Isotype Control (orange): Rabbit IgG (bs-0295P). Blank control (black): PBS. Acquisition of 20,000 events was performed.