

bsm-55526R

[Primary Antibody]

Beta catenin Recombinant Rabbit mAb

Bioss
ANTIBODIES

www.bioss.com.cn

sales@bioss.com.cn

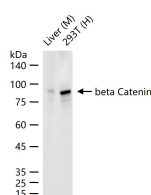
techsupport@bioss.com.cn

400-901-9800

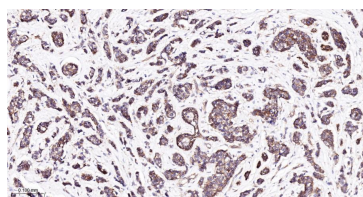
— DATASHEET —

Host: Rabbit	Isotype: IgG	Applications: WB (1:1000-5000) IHC-P (1:200-800) IHC-F (1:200-800) IF (1:200-800) Reactivity: Human, Mouse, Rat Predicted MW.: 85 Subcellular Location: Cell membrane ,Cytoplasm ,Nucleus
Clonality: Recombinant	CloneNo.: SB65	
GeneID: 12387	SWISS: Q02248	
Target: Beta catenin		
Immunogen: A synthesized peptide derived from human beta Catenin: 30-90.		
Purification: Affinity Purification		
Storage: PBS with 100 µg/ml BSA, 0.15% ProClin300 and 50% glycerol. Store at -20 °C for one year. Avoid repeated freeze/thaw cycles.		
Background: Key downstream component of the canonical Wnt signaling pathway. In the absence of Wnt, forms a complex with AXIN1, AXIN2, APC, CSNK1A1 and GSK3B that promotes phosphorylation on N-terminal Ser and Thr residues and ubiquitination of CTNNB1 via BTRC and its subsequent degradation by the proteasome. In the presence of Wnt ligand, CTNNB1 is not ubiquitinated and accumulates in the nucleus, where it acts as a coactivator for transcription factors of the TCF/LEF family, leading to activate Wnt responsive genes.		

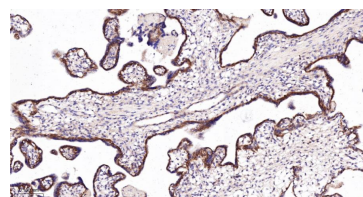
— VALIDATION IMAGES —



25 µg total protein per lane of various lysates (see on figure) probed with beta Catenin monoclonal antibody, unconjugated (bsm-55526R) at 1:1000 dilution and 4°C overnight incubation. Followed by conjugated secondary antibody incubation at r.t. for 60 min.



Paraformaldehyde-fixed, paraffin embedded Human Breast Cancer; Antigen retrieval by boiling in sodium citrate buffer (pH6.0) for 15 min; The section was incubated with Beta catenin Monoclonal Antibody, Unconjugated (bsm-55526R) at 1:200 overnight at 4°C, followed by conjugation to the bs-0295G-HRP and DAB (C-0010) staining.



Paraformaldehyde-fixed, paraffin embedded Human Placenta; Antigen retrieval by boiling in sodium citrate buffer (pH6.0) for 15 min; The section was incubated with Beta catenin Monoclonal Antibody, Unconjugated (bsm-55526R) at 1:200 overnight at 4°C, followed by conjugation to the bs-0295G-HRP and DAB (C-0010) staining.