

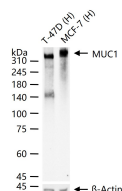
**bsm-55523R****[ Primary Antibody ]****MUC1/CD227 Recombinant Rabbit mAb****Bioss**  
**ANTIBODIES**

www.bioss.com.cn

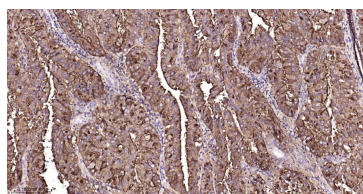
sales@bioss.com.cn

techsupport@bioss.com.cn

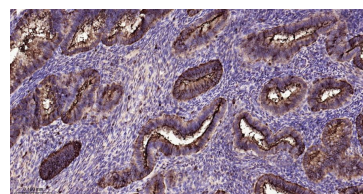
400-901-9800

**— DATASHEET —****Host:** Rabbit**Isotype:** IgG**Clonality:** Recombinant**CloneNo.:** SB48**GeneID:** 4582**SWISS:** P15941**Target:** MUC1/CD227**Purification:** Affinity Purification**Storage:** PBS with 100 µg/ml BSA, 0.15% ProClin300 and 50% glycerol.  
Store at -20 °C for one year. Avoid repeated freeze/thaw cycles.**Background:** Mucins represent a family of glycoproteins characterized by repeat domains and dense O-glycosylation. MUC1 (or mucin 1) is aberrantly overexpressed in most human carcinomas. Increased expression of MUC1 in carcinomas reduces cell-cell and cell-ECM interactions. MUC1 is cleaved proteolytically, and the large ectodomain can remain associated with the small 25 kDa carboxy-terminal domain that contains a transmembrane segment and a 72-residue cytoplasmic tail. MUC1 interacts with ErbB family receptors and potentiates ERK1/2 activation. MUC1 also interacts with  $\beta$ -catenin, which is regulated by GSK-3 $\beta$ , PKC $\gamma$ , and Src through phosphorylation at Ser44, Thr41, and Tyr46 of the MUC1 cytoplasmic tail. Overexpression of MUC1 potentiates transformation and attenuates stress-induced apoptosis through the Akt or p53 pathways**Applications:** **WB** (1: 500-2000)**IHC-P** (1: 200-1000)**IHC-F** (1: 200-1000)**IF** (1: 200-1000)**Reactivity:** Human**Subcellular Location:** Secreted, Cell membrane**Location:** Cytoplasm, Nucleus**— VALIDATION IMAGES —**

25 µg total protein per lane of various lysates (see on figure) probed with MUC1 monoclonal antibody, unconjugated (bsm-55523R) at 1:1000 dilution and 4°C overnight incubation. Followed by conjugated secondary antibody incubation at r.t. for 60 min.



Paraformaldehyde-fixed, paraffin embedded Human Endometrial Cancer; Antigen retrieval by boiling in sodium citrate buffer (pH6.0) for 15 min; Antibody incubation with MUC1/MUC1/CD227 Monoclonal Antibody, Unconjugated (bsm-55523R) at 1:200 overnight at 4°C, followed by conjugation to the bs-0295G-HRP and DAB (C-0010) staining.



Paraformaldehyde-fixed, paraffin embedded Human Endometrial; Antigen retrieval by boiling in sodium citrate buffer (pH6.0) for 15 min; Antibody incubation with MUC1/MUC1/CD227 Monoclonal Antibody, Unconjugated (bsm-55523R) at 1:200 overnight at 4°C, followed by conjugation to the bs-0295G-HRP and DAB (C-0010) staining.